

# PROPOSED GRANGE TO SEMAPHORE PARK LINEAR PARK

Stage I: North



## CONSULTATION REPORT



**Government of South Australia**  
Attorney-General's Department

#16127335

**September 2020**

For further information about this project visit <https://plan.sa.gov.au> or contact the Department via:

- Email: [PlanSA@sa.gov.au](mailto:PlanSA@sa.gov.au)
- Telephone: 1300 782 664

## Contents

1.	Introduction .....	3
2.	Background .....	4
3.	Engagement Approach.....	5
3.1	Engagement objectives .....	5
3.2	Approach and outreach .....	5
4.	Level of Support for the Proposal .....	8
4.1	Summary of all feedback modes.....	8
4.2	Community feedback form .....	9
4.3	Petition against a concrete path .....	10
5.	Analysis of Submissions and Key Themes .....	11
5.1	Analysis against the Objects of the Linear Parks Act .....	11
5.2	Summary of key themes .....	11
5.3	Coast Park pathway materials.....	13
5.4	Path alignment and design .....	14
5.5	Adjacent resident privacy .....	16
5.6	Preserve dunes and identify revegetation opportunities .....	17
5.7	Cycling speed/behaviour and pedestrian safety.....	18
5.8	Other design features .....	19
5.9	Other issues raised.....	20
Appendix A:	Map – Proposed Linear Park Alignment – Grange to Semaphore Park (Stage 1 North) .....	21
Appendix B:	Online Community Feedback Form .....	23
Appendix C:	Public Notice .....	25
Appendix D:	The Advertiser Advert .....	29
Appendix E:	Screen Shot of Petition on Change.org .....	30

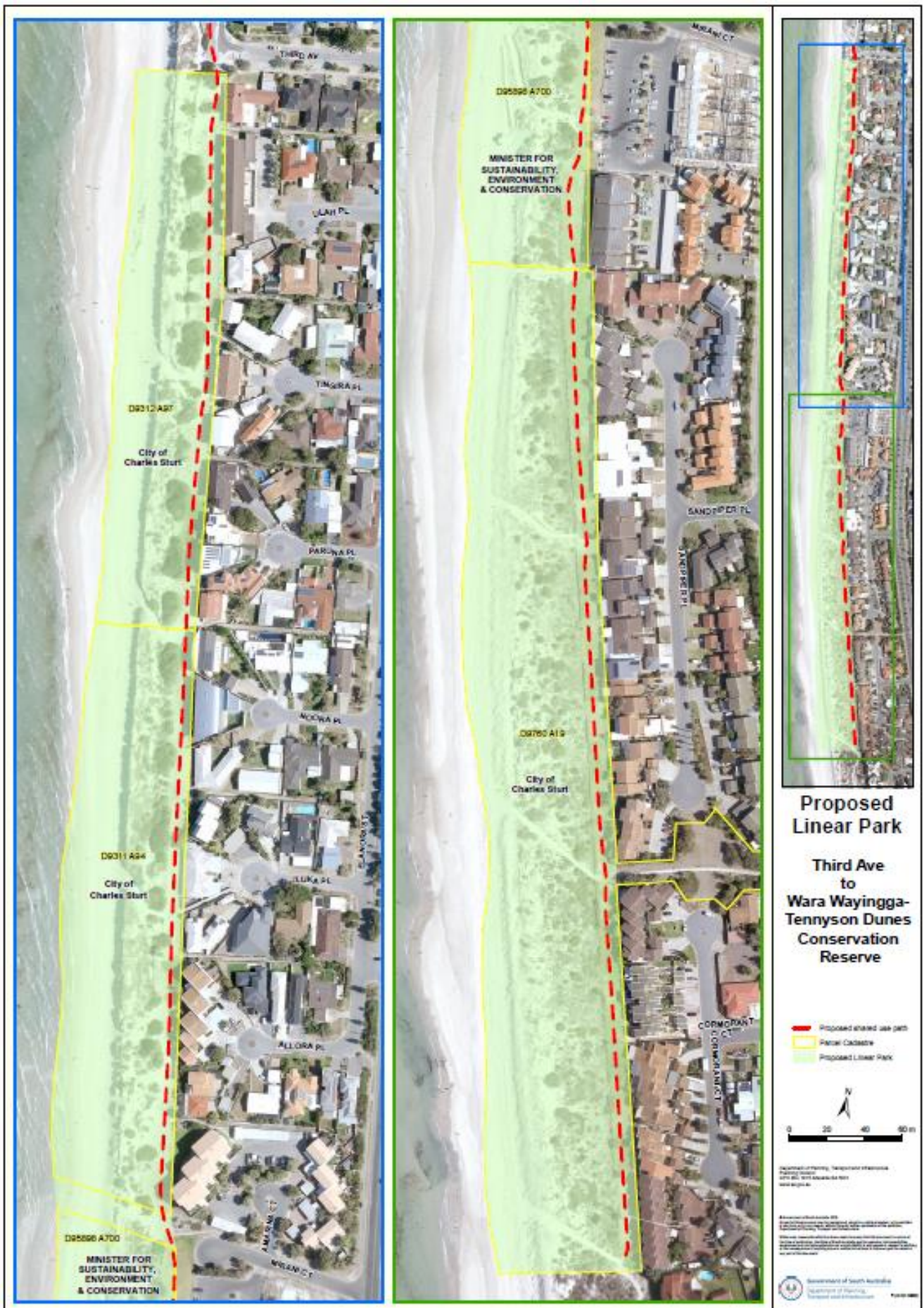
## Tables

Table 1: Level of support for the proposed Linear Park .....	8
Table 2: Petition against a concrete path .....	10
Table 3: Comments received relating to proposed Coast Park design .....	12

## Figures

Figure 1: Level of support for the proposed Linear Park (%) .....	8
Figure 2: Level of support for the proposed Coast Park design (%) .....	9
Figure 3: Comments relating to proposed Coast Park design (%) .....	12





## 1. Introduction

This consultation process focussed on the proposal to create a Linear Park (and a Coast Park shared-use pathway within it) between Grange and Semaphore Park – Stage 1 (North).

This project is being undertaken by the Attorney-General's Department (on behalf of the Minister for Planning and Local Government). It focuses on the 4.8km section of proposed Linear Park or Parks between Grange and Semaphore Park.

As with the planning for the whole of the Coast Park, the alignment of the new path has been carefully considered to maximise community benefit. This location is within the area close to the fence line adjacent the dunes, as distant from adjacent houses as possible without intruding on the sensitive dune system.

Stage One: 'North' extends from Third Avenue, Semaphore Park to the edge of Wara Wayingga-Tennyson Dunes Conservation Reserve.

A possible second stage, which would extend from the edge of Wara Wayingga-Tennyson Dunes Conservation Reserve to Terminus Street, Grange is still under consideration and, if it is considered a viable option, will be subject to further public consultation.

Consultation for the proposed Linear Park commenced on Monday 11 May and concluded on Tuesday 9 June 2020.

This report covers the following:

- the engagement process (including who participated)
- levels of support for the proposed linear park and its design
- the key themes heard from the submissions
- the amendments to the design of the linear park (and Coast Park share-use pathway) in response to the submissions.

## 2. Background

The proposed Linear Park incorporates a Coast Park shared-use pathway (refer to the **Appendix A**).

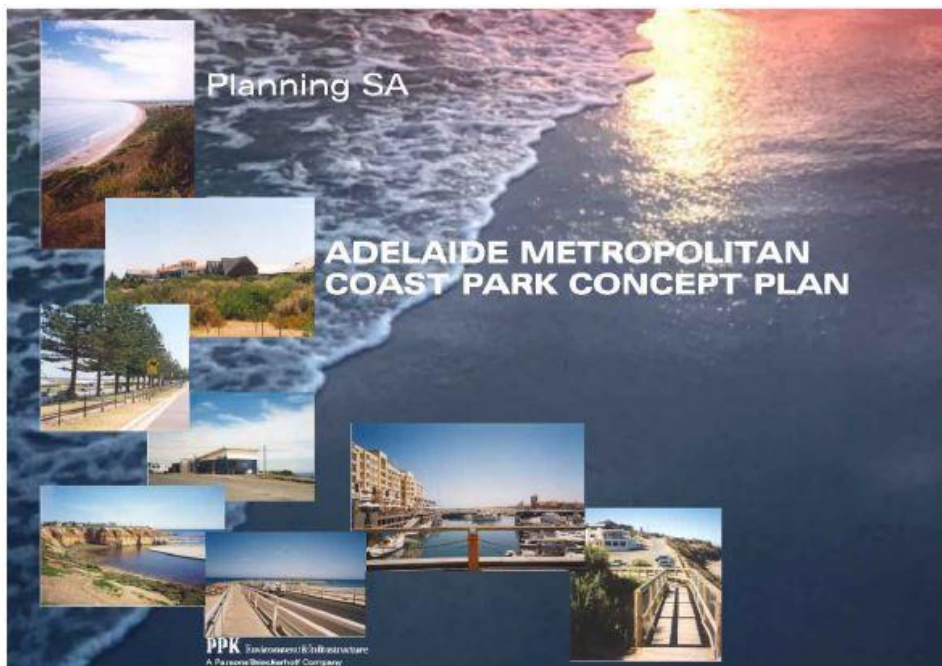
The Coast Park initiative seeks to provide a continuous public cycling and walking link along the Adelaide metropolitan coastline to enhance public use and enjoyment of the coast.

Therefore, the design of the proposed Linear Park (and Coast Park shared-use pathway within it) was based on the following principles:

- ensure shared-use path outcomes are achieved
- promote the use and enjoyment of the area within the proposed Linear Park by the community
- facilitate the use of the area within the proposed Linear Park for exercise and outdoor activities
- provide opportunities for the enhancement of environmental values
- ensure the best environmental and community outcomes are achieved
- provide connectivity to beach access paths and to the local road network
- establish, maintain and preserve the area as a world-class asset to be used and enjoyed as a public park for the benefit of present and future generations.

The proposed shared-use path alignment is located adjacent to the dunes and therefore as far away from the adjacent houses as possible. This alignment was selected to:

- enable the path to be constructed with minimal impact on the native vegetation and fauna habitat within the dunes
- mitigate the risk to exposure of the Coast Park path infrastructure to coastal erosion hazard by maximising the sand buffer
- not result in the fragmentation of the dune system
- provide clear demarcation of public land from private
- minimise the impacts on residential amenity.



*Coast Park  
Concept Plan  
(2002)*



## 3. Engagement Approach

### 3.1 Engagement objectives

The objectives of the engagement process were to:

- build stakeholder awareness about the proposal and available channels to provide feedback
- ensure that stakeholders are well informed about the proposed Linear Park (and Coast Park share-use pathway within it)
- gather feedback regarding the design of the proposed Coast Park shared-use pathway
- identify opportunities to improve the project outcomes.

### 3.2 Approach and outreach

#### *Providing feedback*

Due to Covid-19 restrictions on gatherings, the former Department of Planning, Transport and Infrastructure (DPTI) was unfortunately unable to undertake any of the face-to-face forums and drop-in sessions originally planned for the consultation period. Therefore, the approach was focussed on providing online engagement opportunities as well as the chance to speak to someone from the project team on the phone or via letter/email.

The following avenues for feedback were available:

- A community feedback form was available at [www.saplanningportal.sa.gov.au/have\\_your\\_say](http://www.saplanningportal.sa.gov.au/have_your_say) (refer to **Appendix B** for a copy)
- Email: the project team at [dpti.communityrelations@sa.gov.au](mailto:dpti.communityrelations@sa.gov.au)
- Telephone: 1300 794 880
- Writing to: Department of Planning, Transport and Infrastructure (refer to **Appendix C – Public Notice**).
- Providing comment via the YourSAy: State Government consultation platform, which also contained a link to the community feedback form (**Appendix B**) and YourSAy discussion forum.
- Information on the proposal and details on the opportunity to provide feedback were also provided via DPTI and YourSAy social media posts. An advert was also placed in the Advertiser to further promote the proposal and engagement (**Appendix D**).

#### Linear Park (Grange to Semaphore Park - Stage 1)

##### Registration, Feedback and Suggestions Form

The Minister for Planning is proposing to establish a Linear Park under the *Linear Parks Act 2006*. The potential Linear Park incorporates a proposed Coast Park shared-use pathway.

Coast Park is a State Government initiative which aims to establish a continuous coastal shared use path (for pedestrians and cyclists) along the metropolitan coastline. The aim is to improve community access and enjoyment of our beautiful beaches.

For further information about this project visit: [www.saplanningportal.sa.gov.au/en/linearpark](http://www.saplanningportal.sa.gov.au/en/linearpark)

Your feedback and suggestions are important to assist the Project team to identify issues, risks and opportunities.

Your input may help to shape various aspects of the Project.

All comments and suggestions will be considered by the Project Team.

Information provided will be treated confidentially and responses (when required) will be provided as soon as possible or within 10 working days.

First Name

Last Name

Would you like to sign up for project updates?

☐ Yes

☐ No

Group/Association

Email

### ***Public notice and supporting information***

A public notice was prepared outlining the details about the proposed Linear Park (and Coast Park shared-use pathway within it) and how interested people could provide feedback. Refer to **Appendix C**.

A copy of the public notice (and other supporting information) was made available on the:

- SA Planning Portal  
([https://www.saplanningportal.sa.gov.au/have\\_your\\_say](https://www.saplanningportal.sa.gov.au/have_your_say))
- YourSAy consultation platform  
(<https://yoursay.sa.gov.au/decisions/proposed-linear-park-grange-to-semaphore-park-s/about>).

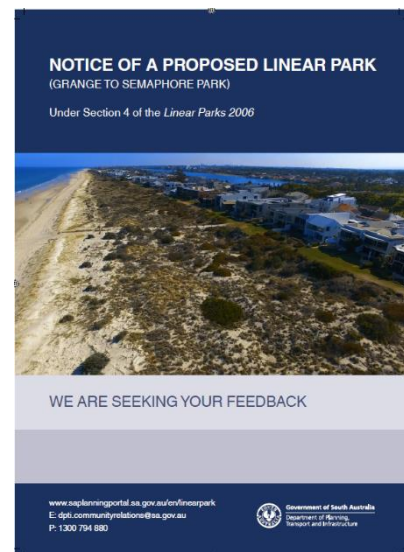
A hard copy of the public notice was also delivered to residents living within approximately 50 metres of the proposed Linear Park (about 860 local properties) and made available at the City of Charles Sturt's Civic Centre.

### **Other communication methods**

#### *Social media*

Details about the proposal and opportunity to provide feedback were also promoted:

- in *The Advertiser* on Saturday 16 May 2020 (as this is the day with the largest readership)
- via the former Department of Planning, Transport and Infrastructure Facebook page, and
- via the YourSAy social media platforms:



#### **Proposed Linear Park (Grange to Semaphore Park – Stage 1)**

*Ended: 09 Jun 2020*

We want your feedback on Stage 1 of the proposed Linear Park (Semaphore Park to Grange) and the proposed Coast Park shared-use pathway within it



## Emails

An email (on the commencement of the consultation process on 11 May 2020) was sent to the:

- Kurna Nation Cultural Heritage Association INC.
- local community groups with a potential invested interest in the area (Friends of Tennyson Dunes, Wild Endangered Dunes Group, Western Adelaide Coastal Residents Association, Coastal Ecology Protection Group and Friends of Gulf St. Vincent).
- The local elected member.

This email outlined the details of the proposed path and the opportunity for the community to provide feedback, along with a link to the Public Notice, the YourSAy platform and Planning SA portal.

### Other communication

A letter was sent to the City of Charles Sturt advising them of the commencement of the engagement process.

The consultation therefore was more extensive than is required by section 4(2) of the *Linear Parks Act 2006*.

## Reach of Social Media platforms

### DPTI Facebook

This platform reached approximately 26,550 people in total for all three posts.

First post (21 May) = 9,091

Second post (1 June) = 10,187 and

Third post (8 June) = 7,265.

### YourSAy

Overall this campaign achieved a combined reach of 24,017 people and generated 7,946 visits to the YourSAy website to learn more the proposal.

Social media across six posts, achieved a combined reach of 16,071 on Facebook and Twitter during the open consultation period.

**"I have been living in the area for the past 8 years. I am so sick and tired of waiting for this to happen. Just build it for the people of South Australia."**

**– YourSAy Comment**

**"I've heard about this talked about for a number of years. It would be good to see work started and a commitment to complete it soon."**

**– Online Feedback Form Comment**

**"We moved into the area in 2003 when there was already a promise of said path. Over the years we have watched other sections completed with increasing frustration despite participating in feedback, consultation etc."**

**– Online Feedback Form Comment**

## 4. Level of Support for the Proposal

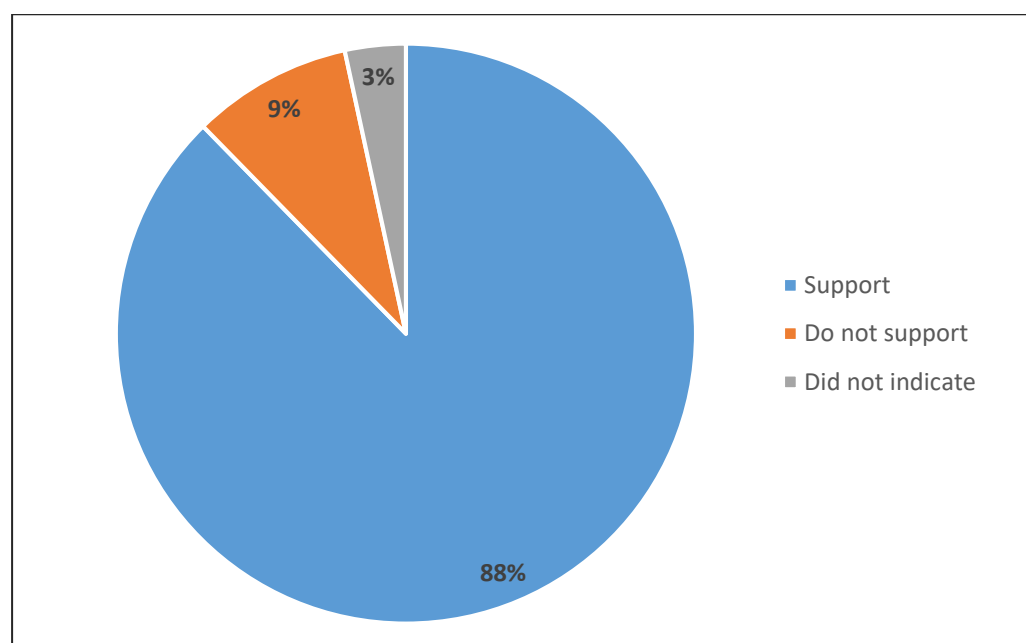
### 4.1 Summary of all feedback modes

The proposed Linear Park (and Coast Park shared-used pathway within it) received overall strong support. **Table 1** below represents the number of respondents via the various feedback modes. **Figure 1** illustrates the overall level of support.

**Table 1: Level of support for the proposed Linear Park**

Level of support	Type of feedback					
	Web-form	Emails	Phone Calls	YourSAy	Letters	TOTAL
Support	417 (93.0%)	47 (77.0%)	17 (58.6%)	78 (83.0%)	10 (66.7%)	569 (87.7%)
Do not support	30 (6.6%)	9 (14.8%)	5 (17.2%)	9 (9.6%)	5 (33.3%)	58 (8.9%)
Did not indicate	3 (0.4%)	5 (8.2%)	7 (24.1%)	7 (7.4%)	n/a	22 (3.4%)
TOTAL RECEIVED	450	61	29	94	15	649

**Figure 1: Level of support for the proposed Linear Park (%)**



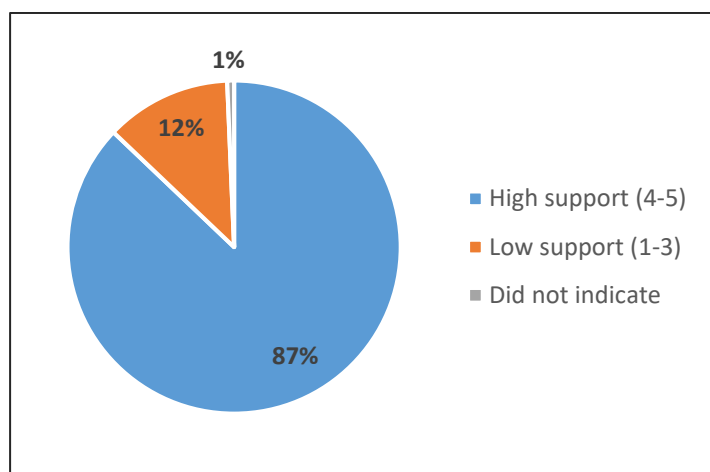
While not a formal submission under Section 4 of the *Linear Parks Act 2006*, the Minister for Planning received a petition signed by 1,773 signatures calling for a more environmentally friendly material than the concrete path. The petition has been provided to the new Minister for Planning and Local Government and will be considered in her decision making process. Further detail is provided in section 4.3 of this Consultation Report.

## 4.2 Community feedback form

The community feedback form provided opportunity for respondents to indicate their level of support (out of 5) for the proposed design of the northern section of Coast Park (Third Avenue to Wara Wayingga-Tennyson Dunes Conservation Reserve). **Figure 2** illustrates the different levels of support.

Respondents that selected 1-3 were categorised within a 'low level of support' for the design, while respondents that indicated a level of support 4-5 were included within a 'high level of support'. Overall, the majority of these submissions indicated a high level of support for the proposed design.

**Figure 2: Level of support for the proposed Coast Park design (%)**



### How is the Coast Park shared-use path network currently used and by whom

The greatest activity undertaken by users of the Coast Park as reported by respondents on the online community feedback form was walking.

More than 400 respondents chose walking as their main activity, with or without a dog. Many respondents also use it for multiple activities. The second highest use is recreational cycling, followed by jogging, outdoor exercise, accessing picnic spots and social gathering in that order.

Of these users, 45% are from the three main local suburbs of Semaphore Park, Tennyson and Grange which are adjacent the proposed linear park. 18% are from the nearby coastal and inner suburbs of Largs Bay, West Lakes and North Haven. The remaining 37% are mostly from other western Adelaide suburbs such as Flinders Park, Croydon, Port Adelaide and environs. Some were also from as far afield as the Adelaide Hills and Goolwa and one from Victoria. See Appendix B for the online feedback form.



**Existing section of Coast Park at Henley Beach**



### 4.3 Petition against a concrete path

The Minister for Planning also received a petition with 1,773 signatures calling for a more environmentally friendly material than the concrete path proposed (see **Appendix E**). This was organised by the Wild Endangered Dunes Group and Sandpipers Dune Care Group community groups.

This petition has been broken down via location of petitioner in **Table 2** below. This table shows that the majority of feedback was from outside South Australia.

This petition is not classified as a formal submission in response to the public notice that was published on the SA Planning Portal under the *Linear Parks Act 2006*, as the public notice (and full details of the proposal) was not provided to the people that signed the petition. It is therefore unclear if these respondents were fully aware of the proposal. None the less the petition has been provided to the Minister for her consideration.

**Table 2: Petition against a concrete path**

Location of Petitioner	Number of signatures	Percent (%)
South Australia	487	27%
Other Australian States	1,173	66%
Overseas	57	3%
Did not indicate address	56	3%
<b>TOTAL</b>	<b>1,773</b>	<b>100%</b>



*Existing section of Coast Park at Henley Beach*



*Existing section of the Wara Wayingga-Tennyson Dunes Discovery Trail*

## 5. Analysis of Submissions and Key Themes

### 5.1 Analysis against the Objects of the Linear Parks Act

Submissions received regarding the proposal to create a Linear Park (and a Coast Park shared-use pathway within it) between Grange and Semaphore Park – Stage 1 (North) have been assessed and analysed against the Objects of the *Linear Parks Act 2006* (the Act).

The Objects and purposes of the Act are to:

1. establish, maintain and preserve linear parks as world-class assets to be used and enjoyed as public parks for the benefit of present and future generations
2. promote the use and enjoyment of linear parks by members of the local community and others
3. promote healthy active lifestyles by facilitating the use of linear parks by members of the local community and others for exercise and other outdoor activities.

All of these three Objects are given equal weight and consideration under the Act. This was an important consideration when assessing the key issues raised by the submissions.

### 5.2 Summary of key themes

While there was strong support for the project, there were approximately 443 comments from all feedback received relating to the proposed design (i.e. alignment, materials, preservation of the dunes etc.) of the shared-use path that would be situated within the park if it is established.

All comments raised are from people who support and don't support the implementation of the Linear Park.

For example, approximately 26% (115) of the submissions received through the online community feedback form indicated support for the creation of a Linear Park but with requests for design changes.

While 5% (24) of submissions received through the community feedback form have indicated they do not support the creation of a Linear Park but have also indicated requests for changes to the proposed design.

**"I need to ride part way on Military Road and I do not feel safe. When riding from Port Malcolm to Outer Harbour on the constructed shared-use pathway I am fine..."**

**For me it would be a huge benefit to be able to ride completely using the shared-use pathway.**

**– YourSAy Comment**

**"I would like to firstly make it clear that I do support the principle of a pathway giving common access to both walking and cycling along the beach front. However, after reviewing the proposal I am disappointed with the lack of design that has been applied."**

**– Web-form Comment**

**As an older recreational rider, I find riding on the road increasingly dangerous and this project will reduce the time that I interact with traffic and will link up the north to the south at last.**

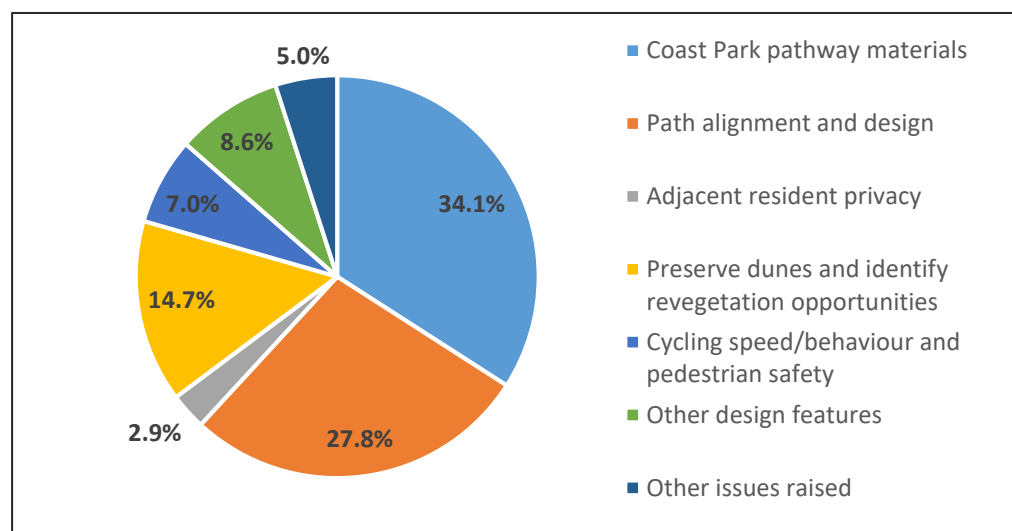
**– Email Comment**

**Table 3** below represents the number of comments relating to the Coast Park design, which were received through submissions via feedback modes. In most submissions a respondent has identified more than one issue or request for change. **Figure 3** illustrates the different key concerns.

**Table 3: Comments received relating to proposed Coast Park design**

Theme	Number of comments (%)
Coast Park pathway materials	151 (34.1%)
Path alignment and design	123 (27.8%)
Adjacent resident privacy	13 (2.9%)
Preserve dunes and identify revegetation opportunities	65 (14.7%)
Cycling speed/behaviour and pedestrian safety	31 (7.0%)
Other design features	38 (8.6%)
Other issues raised	22 (5.0%)
<b>TOTAL COMMENTS RELATING TO DESIGN</b>	<b>443</b>
<i>Total submissions received</i>	<i>649</i>

**Figure 3: Comments relating to proposed Coast Park design (%)**



A number of themes for suggested design changes were identified. These themes were identified through the feedback forms, submissions via letter, YourSAY discussion forum, emails and phone calls.

The key issues have been grouped under the following key themes:

- Coast Park pathway materials
- Path alignment and design
- Adjacent resident privacy
- Preserve dunes and identify revegetation opportunities
- Cycling speed/behaviour and pedestrian safety
- Other design features
- Other issues raised



### 5.3 Coast Park pathway materials

The theme that received the most feedback (both supportive and non-supportive) was the proposed Coast Park pathway material with 34% of all comments about the Coast Park design relating to pathway materials.

For those respondents who provided a comment on the pathway material, only 16% support the proposed material, while the other 84% have requested some form of changes. These requests include:

- construction of a compacted, crushed rubble path (similar to the Tennyson Dunes Discovery Trail)
- construction of a shared-use path using a mixture of concrete and boardwalk
- no change to the current environment with a preference to keep the existing grass.

During the consultation period, a petition organised by the Wild Endangered Dunes Group and Sandpipers Dune Care Group were also received. The petition (referred to in section 4.3 of this Report) was signed by 1,773 individuals and indicates a preference for a low impact, natural path similar to the Tennyson Dunes Discovery Trail.

**“Possible boardwalk sections in some dune areas like at Largs.”**

**– Online Feedback Form Comment**

**A concrete path in those beautiful dunes from Grange to Semaphore Park would be an ecological disaster! A better solution would be an eco-friendly path made, for example, of limestone.**

**– Email Comment**

**“I fully support the construction of a concrete path for Stage 1. It must be DDA accessible.**

**– Online Feedback Form Comment**

### Response

The proposed material (i.e. sandy coloured concrete aggregate) is consistent with other sections of the Coast Park shared-use pathway within the City of Charles Sturt and other council areas.

The Objects of the Act include the promotion of the use and enjoyment of linear parks by members of the community. It is therefore important that the materials used for the shared-use pathway are smooth, skid resistant, dust-free, waterproof and durable. This will allow all types of users to access this pathway, including users of mobility devices, people with prams, people walking and people riding. In addition, the surface will visually enhance the surrounding environment through sympathetic material colour choice by using a sandy coloured concrete.

The materials chosen will also need to be consistent with requirements of shared-use pathways in accordance with Austroads Technical Standards - Part 6A Pedestrian and Cyclist Paths. **For this reason no change to the material choice is recommended.**



*Existing site conditions*

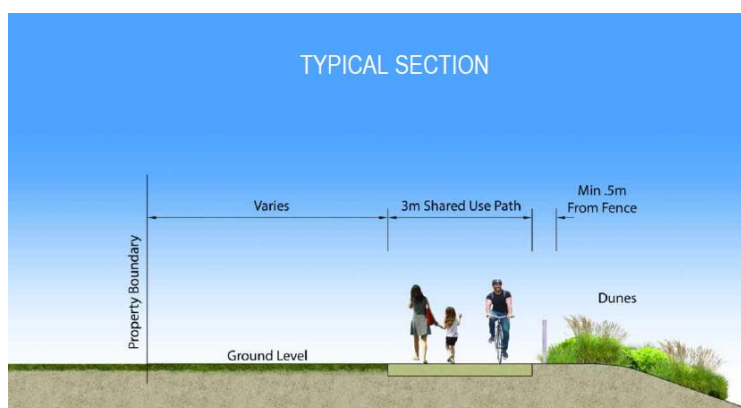


*Artistic impression of proposed Coast Park*

## 5.4 Path alignment and design

Approximately 28% of comments received about the Coast Park design relate to its alignment. In general, the comments made were supportive of the proposed alignment and did not request any changes (approximately 33% of the comments relating to path alignment and design).

It should be noted that those respondents who were supportive of the path alignment also requested the path be DDA compliant.



For those comments that requested changes to the alignment and design, the key issues raised were:

- path alignment (allow for 'meandering' through the dunes, locate path closer to the edge of the dune system or locate path closer to private residences away from the dunes)
- path width (requests to widen and/or reduce the path width)
- separate cycling and walking paths and/or line marking to safely accommodate both pedestrians and cyclists.

**"I am concerned about the lack of design consideration which comes with designing a shared path. In the artistic imagery provided, it appears to be non-existent. A multi-million dollar asset should not be boring ..., yet as we know typical SA infrastructural projects are executed on a shoestring budget and sometimes appear to have little vision as a long-term asset to the community and State of South Australia. ... the stretch just completed in front of Minda holds a credible level of detail and design, will age well and is an actual asset for the State."**

**– YourSAy Comment**

The respondents who requested the path alignment be adjusted to allow for 'meandering' through the dunes or for the path to be closer to the edge of the dune system provided the following reasons:

- to provide a more scenic experience
- to be further away from private properties
- to be less straight (issue with cycling speed – further information provided in Section 5.7)

In general, the requests to widen the path were made from those concerned with cyclist speeds and were seeking greater separation from cyclists and pedestrians (especially in pinch points).

In addition, comments were received requesting that the path appropriately connects to other coastal pathways including Tennyson Dunes.

## Response

The Objects of the Act include the promotion of the use and enjoyment of linear parks by members of the community. Therefore the pathway will need to be designed to meet minimum width and surface requirements to be suitable for a range of users including people walking, riding, users of mobility devices and other users.

The connection to Tennyson Dunes and other coastal pathways is an important consideration and localised widening at these points will be considered (where appropriate) to accommodate public facilities like seating.

Visual cues in the form of contrasting pavement will be adopted in these areas to highlight to path users approaching beach access paths or junctions with other paths. This will enable users to moderate their speed and be able to react accordingly based on the conditions.

The alignment mitigates impact on the dune system by limiting public access to environmentally sensitive areas. It also meets the recommendations of the Department of Environment and Water and is a very low risk of being exposed to coastal erosion hazard.

**Overall no change to the alignment is recommended.**

**"This would be fantastic.  
Would love to take the  
whole family on bike rides to  
Outer Harbour. Currently  
put off due to having to use  
Military Road."**

**– YourSAy Comment**

**"Great to see an initiative  
where all bodies (able or not)  
are able to share in the local  
community areas!"**

**– Online Feedback Form  
Comment**



## 5.5 Adjacent resident privacy

Concerns regarding the proximity of the path to houses directly fronting the public reserve was made by both the residents and the general public (approximately 3% of comments made regarding path design).

While some beach front local residents have requested that the path be moved further into the dunes, those not living in the area have raised proximity to houses as a concern due to the lack of delineation between private and public land.

Requests were also made for clear identification of where the public can use grassed areas for recreation.

### Response

The Objects of the Act seek to establish, maintain and preserve linear parks as world-class assets to be used and enjoyed as public parks for the benefit of present and future generations.

Therefore, the shared-use pathway will be incorporated within the existing cleared public open space (Council reserve) so as to ameliorate impacts on environmentally sensitive areas (i.e. dunes) and promote use for other outdoor activities. The alignment also follows an existing 'desire path' formed by wear from regular foot traffic and links to beach accesses.

There is no change proposed to the pathway alignment. The alignment assists in delineating public and private land and opportunities for landscaping will be considered through the detailed design process and in discussion with the City of Charles Sturt.



**"Fencing on each side of the path to help protect residential property and the coastal dunes."**

**– Online Feedback Form  
Comment**

**I don't see any significant problems with the design, however it would be helpful if the project would in some way clearly delineate the public land from the adjoining private properties. If so, it would at last be clear when private encroachments onto the public land were occurring.**

**– Online Feedback Form  
Comment**

## 5.6 Preserve dunes and identify revegetation opportunities

The impact of the proposed Coast Park pathway on the dune system was not a major concern of respondents who made comments about the path design (approximately 15% of the comments made regarding path design). This is because the proposed pathway is situated across grassed and already cleared areas on the eastern side of the existing fence to the dunes.

There have been requests for as little impact on the dunes or additional works (as part of the Linear Park project) to be undertaken to further preserve the dunes.

Other concerns expressed included the need to ensure dunes are protected from path users and for the removal of weeds and exotic plants from dune environment.

In addition, a written submission was received from Green Adelaide (DEW), in support of the proposed location for the Linear Park. The submission advises that the proposed location (on the open space between the sand dunes and private properties) will help minimise the impact on the surrounding dune environment.

### Response

The Objects of the Act include the establishment, maintenance and preservation of linear parks as world-class assets to be used and enjoyed as public parks for the benefit of present and future generations.

Therefore, the alignment enables the path to be constructed with minimal impact on the native vegetation and fauna within the dunes. It prevents fragmentation of the dune system.

In addition, the Objects of the Act seek to promote healthy, active lifestyles by facilitating the use of linear parks by the community for exercise and other outdoor activities. Locating the pathway within a public reserve will help promote this and limits public access to environmentally sensitive areas.

The Act does not give any extra weight to its Object of establishing, maintaining and preserving linear parks. The Object is of equal significance to the other Object specified in the Act, such as promoting the use and enjoyment of linear parks by members of the community. The proposed alignment of the pathway strikes an appropriate balance between the Act's Objects.

Options for landscaping will be explored with Council through the detailed design phase of the project.

**"I was totally opposed to the construction of a path through the dunes at Largs Bay in 2001. I feared destruction of vegetation and the degradation of the fragile and unique eco-structure of the dunes.**

**I was wrong.**

**Having walked, done volunteer weeding and taken my granddaughter cycling on the completed path, I have come to value the contribution that the path has made to the heritage of these dunes that stretch from Grange to North Haven.**

**A path will reinforce the diversity of the area, while enabling present and future generations to appreciate and value this unique coastal area."**

**– YourSAy Comment**

## 5.7 Cycling speed/behaviour and pedestrian safety

Approximately 7% of those who made comment on the path design raised concerns regarding cyclist speeds with requests made to widen the path to allow for better separation from cyclists and pedestrians (especially in pinch points) and ensure DDA compliance. In some cases requests were made for separate paths for cyclists and pedestrians.

### Response

The Objects of the Act include the provision of a safe recreational facility for all users, encouraging the use and enjoyment of linear parks (e.g. walking and cycling etc.) and the promotion of healthy and active lifestyles.

Visual cues such as contrasting pavement at intersection points, including beach accesses and junctions of other paths, will therefore be adopted to ensure all users are able to moderate their speed to be able to react accordingly based on the condition.

The proposal for a 3m shared use path is consistent with existing sections of Coast Park and is considered appropriate in this area.

Additional width for public facilities (such as seating at path nodes) will be provided where appropriate. It will be designed in accordance with Austroads Technical Standards - Part 6A Pedestrian and Cyclist Paths.

**"So, so happy to see it finished, especially for cyclist and aged people in wheelchairs and walkers. It's been too long coming.**

**– YourSAy Comment**

**"Don't allow cyclists on there. I feel it is unsafe with bikes going past walkers so quickly and other scooters etc."**

**– Online Feedback Form Comment**

**"The proposed design could be improved by adding some planting of natives and perhaps some meandering of the pathway. I support the proposed width of the path, but feel that there needs to be ways of slowing cyclists who may speed along a straight wide path"**

**– Online Feedback Form Comment**



## 5.8 Other design features

The feedback has also highlighted the desire from some users for additional public amenities such as:

- seating/picnic areas
- lighting
- signage (directional and interpretive)
- art
- shade
- toilets.

### Response

The Objects of the Act include facilitating use of linear parks by the community for exercise and other outdoor activities.

Therefore, it is acknowledged that it would be beneficial to provide supporting facilities such as shade and seating at regular intervals along the path (where possible). Opportunities to provide additional public facilities will be investigated to support this Object and will be considered in appropriate locations in consultation with local government.

Note: outside the scope of this project are items such as public toilets, shade structures and public art.

The project team will discuss options for additional public amenities, such as seating and signage, with the City of Charles Sturt. This is important due to potential maintenance issues.

**“We like the proposed route and the colour of the path. We would like to see more amenity along the trail, i.e. a space to sit, shade, drinking fountain. “**

**– Online Feedback Form Comment**

**“Some nice lighting, smooth footpaths and some nice architectural sculptures/ landscape designs. Including some natural boardwalk look-outs to minimise environmental impacts.”**

**– Online Feedback Form Comment**

## 5.9 Other issues raised

Other matters that have been raised include dogs on leash, beach access, car parking and maintenance (approximately 5% of comments made regarding the path design).

Also raised was the 2017 Court Case against the City of Charles Sturt.

### Response

Apart from beach access and maintenance, these matters are outside the scope of the project and are within the authority of local government. The relevant local council will be advised of these concerns.

The relevant comments have been referred to the City of Charles for any further action as required.

The proposed pathway alignment includes linkages to beach access points and will minimise its exposure to the impacts of coastal erosion.

In addition, the consultation that has been undertaken by the former Department of Planning, Transport and Infrastructure (DPTI) is separate to that which was undertaken by the City of Charles Sturt. The 2017 Court Case related to Council's actions under the Local Government Act 1999 and is not relevant to the proposed establishment of a linear park under the Linear Parks Act 2006.

**"Improve the beach access ramps."**

**– Online Feedback Form Comment**

**"The maintenance will only add to the already exorbitant rates to support the leisure of non-rate payers."**

**– Online Feedback Form Comment**

**"The legality of the proposal has already been challenged and in his judgement the Judge (Blue) came down that the proposed concrete road is not the preferred option."**

**– Online Feedback Form Comment**

## Appendix A: Map – Proposed Linear Park Alignment – Grange to Semaphore Park (Stage 1 North)

See overleaf





## Appendix B: Online Community Feedback Form

### Linear Park (Grange to Semaphore Park - Stage 1)

#### Registration, Feedback and Suggestions Form

The Minister for Planning is proposing to establish a Linear Park under the *Linear Parks Act 2006*. The potential Linear Park incorporates a proposed Coast Park shared-use pathway.

Coast Park is a State Government initiative which aims to establish a continuous coastal shared use path (for pedestrians and cyclists) along the metropolitan coastline. The aim is to improve community access and enjoyment of our beautiful beaches.

For further information about this project visit: [www.saplanningportal.sa.gov.au/en/linearpark](http://www.saplanningportal.sa.gov.au/en/linearpark)

Your feedback and suggestions are important to assist the Project team to identify issues, risks and opportunities.

Your input may help to shape various aspects of the Project.

All comments and suggestions will be considered by the Project Team.

Information provided will be treated confidentially and responses (when required) will be provided as soon as possible or within 10 working days.

First Name

Last Name

Would you like to sign up for project updates?

☐ Yes

☐ No

Group/Association

Email

Phone number (home)

Phone number (business)

Phone number (mobile)

Street number/Street name

Suburb

Postcode

State

Your key area(s) of interest

- ☐ Parking
- ☐ Walking/Cycling
- ☐ Construction Impacts
- ☐ Urban Design
- ☐ Local Access
- ☐ Project Overall
- ☐ Other

Do you support the creation of a Linear Park?

☐ Yes

☐ No

Do you currently use other sections of the Coast Park? (please select one)

☐ Yes

☐ No

How often do you use the Coast Park?

---

- ☐ Sometimes
- ☐ Often
- ☐ Regularly (e.g. weekly)
- ☐ All the time (daily)

How do you currently use the Coast Park? (please tick those that apply to you)

---

- ☐ Walking
- ☐ Jogging
- ☐ Recreational cycling
- ☐ Skating
- ☐ To access picnic spots/social gatherings
- ☐ Cycling to commute to work
- ☐ To walk the dog
- ☐ For outdoor exercise
- ☐ Other

Please indicate each of the following that apply to you (multiple response)

---

- ☐ Local resident
- ☐ Local business
- ☐ Local property owner
- ☐ Cyclist
- ☐ Pedestrian
- ☐ Local community/environment/resident group member
- ☐ Other

On a scale of 1 to 5 how do you rate your level of support for the proposed design of the northern section (Third Avenue to Wara Wayingga-Tennyson Dunes Conversation Reserve)?

---

- ☐ 1 (low support)
- ☐ 2
- ☐ 3
- ☐ 4
- ☐ 5 (high support)

How could the proposed design be improved?

Your comments, questions, feedback and/or suggestions

# NOTICE OF A PROPOSED LINEAR PARK

(GRANGE TO SEMAPHORE PARK)

Under Section 4 of the *Linear Parks 2006*



WE ARE SEEKING YOUR FEEDBACK

[www.saplanningportal.sa.gov.au/en/linearpark](http://www.saplanningportal.sa.gov.au/en/linearpark)  
E: [dpti.communityrelations@sa.gov.au](mailto:dpti.communityrelations@sa.gov.au)  
P: 1300 794 880



Government of South Australia  
Department of Planning,  
Transport and Infrastructure

## Public Notice: April 2020

The Minister for Planning is proposing to establish a Linear Park under the Linear Parks Act 2006.

The objectives of this Act are to:

1. establish, maintain and preserve linear parks as world-class assets to be used and enjoyed as public parks for the benefit of present and future generations;
2. promote the use and enjoyment of linear parks by the community; and
3. facilitate the use of linear parks for exercise and outdoor activities.

### Grange to Semaphore Park

This project is being undertaken by the Department of Planning, Transport and Infrastructure (on behalf of the Minister for Planning). It focuses on the 4.8km section of proposed Linear Park or Parks between Grange and Semaphore Park.

As the area is divided by the Wara Wayingga-Tennyson Dunes Conservation Reserve, a two stage approach has been adopted for its further investigation and consultation:

- Stage One ('North') - The establishment of a Linear Park between Third Avenue, Semaphore Park to the edge of Wara Wayingga-Tennyson Dunes Conservation Reserve – out for consultation now (see map overleaf)
- Stage Two ('South') - The establishment of a Linear Park or parks between the edge of Wara Wayingga-Tennyson Dunes Conservation Reserve to Terminus Street, Grange- this section will be released separately for consultation in the future.

This notice relates only to Stage One ('North').

### Proposed Coast Park shared-use pathway

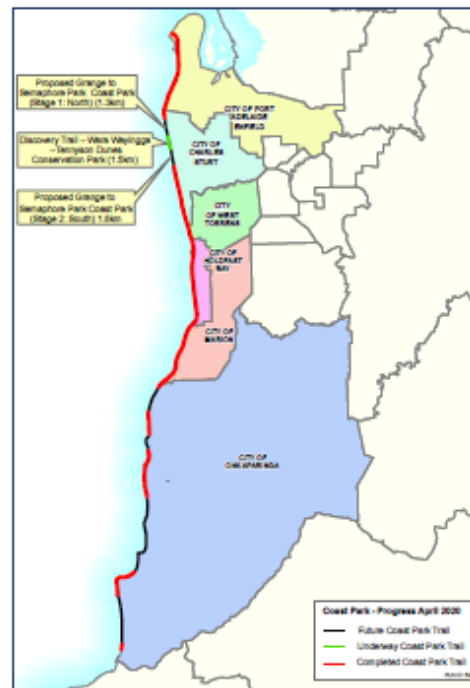
The potential Linear Park within Stage One (North) incorporates a proposed Coast Park shared-use pathway.

Coast Park is a State Government initiative to establish a continuous 70km coastal linear park along the metropolitan coastline which aims to:

- Improve access to enjoy our beautiful coastline;
- link various coastal features and activity centres through the provision of a shared-use recreation path;

- provide convenient access for all people wishing to use the coast and ensuring free, safe and convenient access and facilities that are available for all ages and abilities;
- increase recreation opportunities along the coastline;
- reinforce the diversity of the coastline; and
- enhance the existing coastal environment through dune revegetation and erosion control.

Coast Park has been progressively implemented by State Government and local councils since 1992 and the section between Grange and Semaphore Park is one of the few remaining links still to complete.









## Public Notice: April 2020

### Proposed design for Stage 1 ('North')

Within the proposed Linear Park, an informal walking track currently traverses the cleared land between the dunes and seafront properties. As this area is a combination of gravel, sand, dirt and lawn grass, it is only accessible to a narrow range of users. The existing path is a 'desire line' which has been formed by wear from regular foot traffic.

Coast Park seeks to provide a continuous public cycling and walking link along the Adelaide metropolitan coastline to enhance public use and enjoyment of the coast. To meet this objective it must be publically accessible; a shared use path at least three metres wide and constructed of a smooth surface that supports prams, bicycle riders, wheeled toys and wheelchair users.

Therefore the design of this section of Linear Park will be based on the following principles:

- ensure shared-use path outcomes are achieved;
- promote the use and enjoyment of linear parks by the community;
- facilitate the use of linear parks for exercise and outdoor activities
- provide opportunities for the enhancement of environmental values
- ensure the best environmental and community outcomes are achieved;
- provide connectivity to beach access paths and to the local road network and
- establish, maintain and preserve the area as a world-class asset to be used and enjoyed as a public park for the benefit of present and future generations.

An investigation was undertaken of the proposed Linear Park area to identify the best location for a Coast Park shared-use pathway. It is proposed that the alignment with the most benefits would be located within the cleared area adjacent the dunes, furthest away from the adjacent houses as possible. This is in terms of:

- enabling the path to be constructed with minimal impact on the native vegetation and fauna habitat within the dunes;
- mitigating the risk to exposure of the Coast Park path infrastructure to coastal erosion hazard by maximising the sand buffer;
- it not resulting in the fragmentation of the dune system;
- providing clear demarcation of public land from private; and
- minimising the impacts on residential amenity.

Refer to the artistic impression (below) for an indication of what the Coast Park shared-use pathway might look like. Re-vegetation and seating opportunities will be considered wherever possible. It is proposed that the shared-use path material is a sandy coloured concrete like the Coast Park section along Henley Beach.

Before



After



The Coast Park section would be constructed in an environmentally sensitive manner with consideration of the sensitive nature of the dunes. Construction will be in line with relevant EPA guidelines and other state environmental regulations.

### Community Engagement

The Minister for Planning is seeking your feedback on the proposed Linear Park (including the Coast Park shared-use path) for Stage One ('North').

Feedback on the proposed park and the path alignment for Stage One ('North') can be provided until COB X May, 2020, by:

- Visiting: [www.saplanningportal.sa.gov.au/en/linearpark](http://www.saplanningportal.sa.gov.au/en/linearpark) and filling out the Registration, Feedback and Suggestions form
- Emailing: the project team at [dpti.communityrelations@sa.gov.au](mailto:dpti.communityrelations@sa.gov.au)
- Calling: 1300 794 880
- Writing to: Department of Planning, Transport and Infrastructure – Linear Park Stage One ('North'), GPO Box 1533, ADELAIDE SA 5000.

A summary of the feedback received will be provided on the project website after the consultation period ends, following a detailed review period.



**Government of South Australia**

Department of Planning,  
Transport and Infrastructure

# **Have your say on a proposed Linear Park**

**(Grange to Semaphore Park – Stage 1)**

The Minister for Planning is proposing to establish a Linear Park under the *Linear Parks Act 2006*.

The proposed Linear Park (Grange to Semaphore Park, Stage 1: North) incorporates a potential Coast Park shared-use pathway.

Coast Park is a State Government initiative which aims to establish a continuous 70 km coastal shared-use path (for pedestrians and cyclists) along the metropolitan coastline. The aim is to improve community access and enjoyment of our beautiful beaches.

Community information sessions cannot be accommodated owing to COVID-19 restrictions, with a focus on on-line engagement opportunities. For those who do not have online access but are interested in providing comment please contact us using the details below.

For a copy of the public notice, a map of the proposed Linear Park and to fill out a feedback form, please visit:  
[www.saplanningportal.sa.gov.au/en/linearpark](http://www.saplanningportal.sa.gov.au/en/linearpark).

To discuss this proposal please: email [dpti.communityrelations@sa.gov.au](mailto:dpti.communityrelations@sa.gov.au), call 1300 794 880 or visit the relevant YouSAy page.

## Appendix E: Screen Shot of Petition on Change.org

change.org

[Start a petition](#) [My petitions](#) [Browse](#) [Contributions](#)

[Log in](#)

### Say "NO!" to a 3M concrete shared path - help us to promote an eco-friendly path.



Carol Crossley started this petition to [The Hon Stephen Knoll MP Member for Schubert \(Minister for Planning, Transport and Infrastructure\)](#) and [2 others](#)

**Coast Park Grange to Semaphore Stage 1 (North) - Linear Park proposed between Third Ave Semaphore Park and the Waga Waringga - Tennyson Dunes Conservation Reserve.**

The Community Relations department of Dept Planning and Infrastructure tell us... It is planned to create a "shared use path at least 3M wide and constructed of a smooth surface (they describe as a sandy coloured concrete like the coast park section along Henley Beach) that supports prams, bicycle riders, wheeled toys and wheelchair users."

We support the idea of making this area more accessible however we would like a path made of more environmentally friendly material than what has been proposed.

Our children, friends, families and pets walk, ride and play in this grassed area (which is maintained by the residents not the council). We want them to continue to be safe using this lovely area. A "smooth surface" which we believe will make this less of a "path" and more of a "race track". The option we suggest is an extension of the "Wara Waringga Tennyson Dunes Conservation Reserve".

There are bearded dragons, blue tongue lizards, birds and other animals that live in this area, in the dunes, which will no doubt be displaced if such a large path is built. Local residents work in collaboration with the City of Charles Sturt to weed and re-vegetate the precious dunes.

Please join us in protecting this area.

#### Petition Closed

This petition had 1,650 supporters



Say "NO!" to a 3M concrete shared path - help us to promote an...

[Share on Facebook](#)

[Send a Facebook message](#)

[Send an email to friends](#)

[Tweet to your followers](#)

[Copy link](#)