



What is the Murray Mallee Regional Plan?

The Murray Mallee is a highly productive agricultural region, known for wheat, barley, and livestock. The Murray River plays a vital role in supporting irrigation for citrus, stone fruit, and wine production. The region is also home to unique Mallee vegetation, conservation parks, and significant First Nations cultural heritage. Tourism is a key industry, with houseboating, fishing, and nature-based experiences drawing visitors to the river and surrounding landscapes.

The Murray Mallee Regional Plan (the Plan) identifies land and long-term infrastructure needs to support sustainable growth within the region, over a 15-to-30-year period. It reflects the unique and changing profile of the region's population, environment and economy across its vast rural areas and varied townships.

What is in the Plan? The Plan focuses on five key themes that are critical to the region's future:

People, housing and liveability

- Expanding housing supply and diversity to meet the needs of a growing and ageing population.
- Enhancing design quality to improve liveability and community wellbeing.
- Tackling affordable housing challenges, especially in growth areas.
- Ensuring housing suits various household types, including seasonal workers, seniors, and young families.
- Preserving the region's cultural and heritage identity.

Natural resources, environment and landscapes

- Protecting biodiversity and ecological assets, including Ramsar-listed wetlands and coastal ecosystems.
- Strengthening climate resilience through adaptation strategies, including updated hazard mapping for flooding, bushfires, and more.
- Safeguarding the Murray River and surrounding environments from degradation.
- Ensuring water security and quality for agriculture, industry, and communities, particularly with climate change in mind.
- Managing natural hazards such as floods, bushfires, and extreme weather.
- Reducing emissions and mitigating the impact of hazardous activities on the environment.

Productive economy

- Strengthening primary industries such as agriculture, viticulture, and renewable energy to drive economic growth.
- Supporting employment lands development to meet future workforce needs.
- Promoting innovation in agriculture, tourism, and renewable energy.
- Diversifying the economy with investments in tourism and initiatives like the River Murray International Dark Sky Reserve.
- Addressing the ageing workforce and attracting young talent to key industries.

Transport and infrastructure

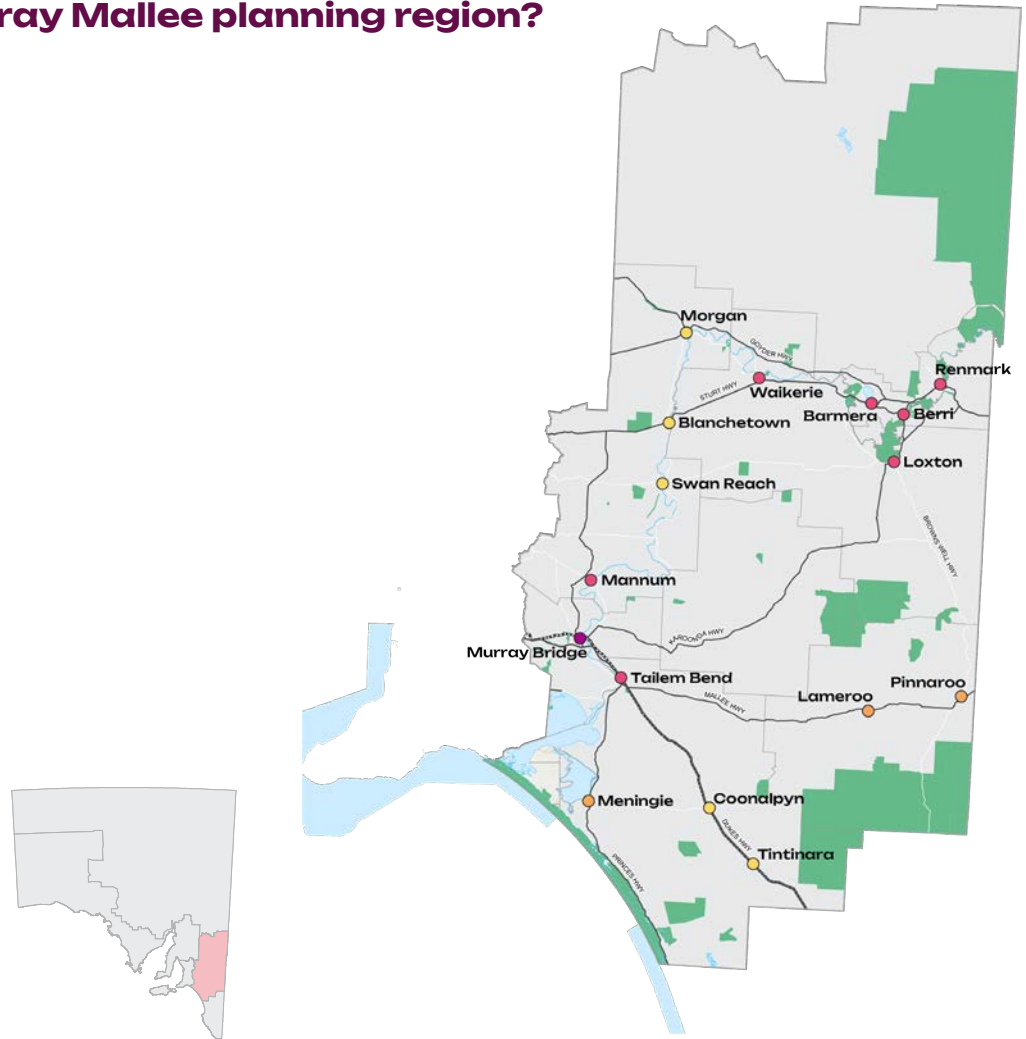
- Promoting integrated planning for coordinated land use and infrastructure development.
- Investing in strategic transport infrastructure to enhance regional connectivity.
- Expanding energy infrastructure to support renewable energy zones and ensure energy security.
- Strengthening integrated water management to secure and improve water quality.
- Preserving infrastructure reserves and transport corridors for future growth.

Delivery and implementation

- Launching the Regional Planning Portal for tracking and reporting progress.
- Setting measurable targets and actions to guide regional development and assess success.
- Prioritising short-term actions, especially in infrastructure and housing, to address immediate needs.
- Ensuring long-term regional growth through effective land use policies and planning processes.

Where is the Murray Mallee planning region?

- Regional City
- Major Service Centre
- Supporting Service Centre
- Local Service Centre
- National parks and conservation reserves
- State marine park network
- Local government area
- Major transport route
- Railway



Get involved

Consultation is open for 12 weeks until 11:59pm on Tuesday 17 June 2025. To provide feedback:

- Visit <https://yoursay.sa.gov.au/murray-mallee-regional-plan> to take our survey or complete our [Easy Read](#) version
- Complete the [online submission form](#)
- Email plansasubmissions@sa.gov.au (Subject: Submission – Murray Mallee Regional Plan)
- Post your submission to:
Planning and Land Use Services
Attention: Strategic Planning Team
Department for Housing and Urban Development
GPO BOX 1815
ADELAIDE SA 5001

Need help?

Register for an online information session: plansaevents.eventbrite.com



Visit
regional.plan.sa.gov.au



Email
PlanSA@sa.gov.au



Call
PlanSA Service Desk
on 1800 752 664