

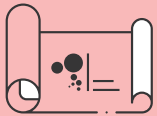


Frequently Asked Questions Yorke Peninsula and Mid North Regional Plan



Who is the State Planning Commission?

The State Planning Commission (the Commission) is South Australia's leading development assessment and planning advisory body. It provides independent advice on all aspects of planning and development and is responsible for preparing regional plans.



What is a regional plan?

Regional plans set the direction for future planning and development in South Australia, tailored to each region. These plans map out a 15-to-30-year vision, including:



where new housing and jobs should be located



strategies to protect key areas while renewing others



how transport networks should evolve to improve connectivity to major centres and smaller townships



the essential infrastructure needed to support growth

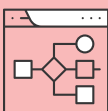


how can we protect biodiversity, cultural heritage and ecosystems



using climate data to mitigate risks from extreme weather events

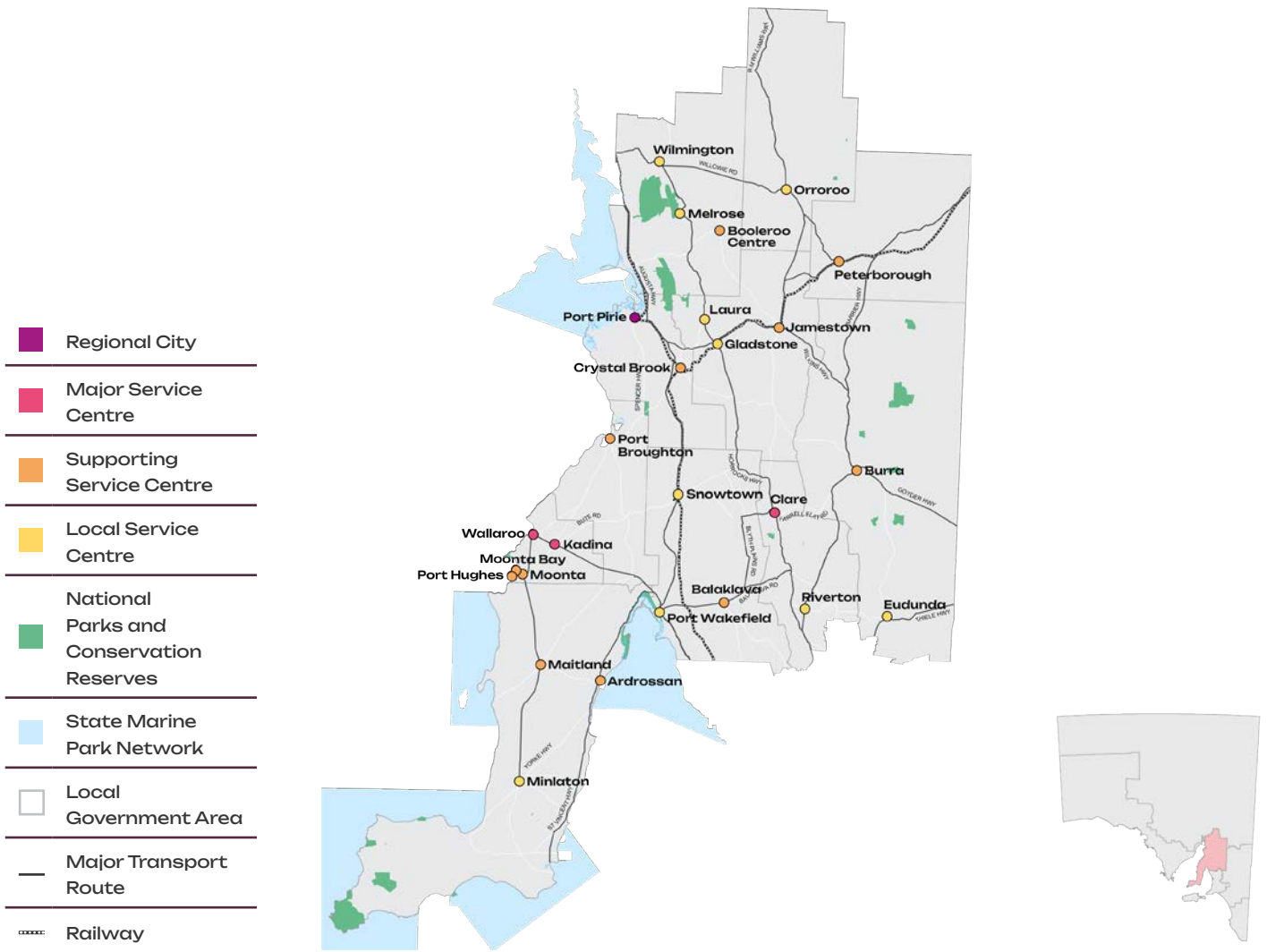
The Commission, in partnership with Planning and Land Use Services, is developing six new country regional plans for South Australia, including the Yorke Peninsula and Mid North region. Planning for this growth and change is essential to ensure that these region remain sustainable and prosperous.



Did you know?

South Australia has the only fully digitised planning system in the country, featuring the Regional Planning Portal. This platform provides interactive maps, spatial plans, and real-time data, helping align planning decisions with regional needs and supporting infrastructure, land use, and transport development across the state.

Where is the Yorke Peninsula and Mid North planning region?



What is the Yorke Peninsula and Mid North Regional Plan?

The Yorke Peninsula and Mid North Regional Plan sets out land and infrastructure priorities to support sustainable growth across the region's diverse rural and township communities.

With the population expected to grow by 38.3% by 2054, driven by jobs in tourism, agriculture, and mining, the Plan focuses on affordable and diverse housing to meet the needs of an ageing population, smaller families, and workers. It also protects biodiversity while supporting emerging industries like green hydrogen and copper production.

How is the Plan developed?

Under the *Planning, Development and Infrastructure Act 2016*, regional plans are mandatory for each of the state's planning regions. Input from local councils, businesses, and residents gathered through workshops, surveys, and ongoing consultation shapes the Plan to ensure it meets regional needs.

What are the Plan's key themes?

The Plan focuses on:

- People, housing and liveability.
- Productive economy.
- Environment, natural resources and landscapes.
- Transport and infrastructure.
- Implementation and delivery.

What are some of the key themes that I can provide input on?

We are particularly interested in your views on how we can:

- Deliver diverse housing near employment hubs like Port Pirie and Clare to cater for an ageing population, smaller households, and seasonal workers.
- Support projects like Port Pirie's green hydrogen initiative and the Hillside Iron Oxide Copper Gold deposit.
- Boost primary industries through value-adding and sustainable land practices.
- Upgrade transport infrastructure to improve access to services and support regional growth.
- Protect the region's diverse inland, coastal and marine ecosystems.

How can I learn more about the Plan?

Join one of our online information sessions to hear directly from our planners. Register at: plansaevents.eventbrite.com

You can also learn more by:



Visiting:

regional.plan.sa.gov.au



Emailing:

PlanSA@sa.gov.au



Calling:

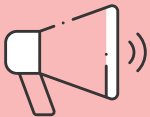
PlanSA Service Desk
on 1800 752 664.

How can I provide feedback on the Plan?

Consultation is open for 12 weeks until 5pm on Wednesday 7 May 2025. Visit [YourSAy](#) to provide your feedback.

When will the Plan be implemented?

After consultation, feedback will be considered, and the Plan updated and presented to the Commission for endorsement. The final Plan is expected to be released in late 2025 and will be accessible on the [Regional Planning Portal](#).



Stay updated

Sign up for the [Planning Ahead Newsletter](#)

Follow us on [Facebook](#), [X \(Twitter\)](#) and [LinkedIn](#) for regular updates.