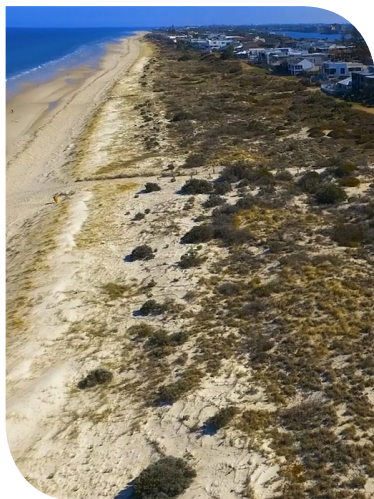


OPEN SPACE AND PLACES FOR PEOPLE GRANT PROGRAM

2019/20 - Metropolitan Councils



Government of South Australia

Department of Planning,
Transport and Infrastructure

OPEN SPACE AND PLACES FOR PEOPLE GRANT PROGRAM 2019/20 - Metropolitan Councils

PROJECT NAME Whitmore Square/ Iparrityi Master Plan - Stage 1 Upgrade
(City of Adelaide)

COST AND FUNDING CONTRIBUTION

Council contribution	\$1,400,000
Planning and Development Fund contribution	\$900,000
TOTAL PROJECT COST	\$2,300,000

PROJECT DESCRIPTION

Council is seeking funding to deliver the first stage of the master plan to establish pleasant walking paths and extend the valued leafy character of the square from its centre to its edges. This project involves:

- Safety improvements to the northern tri-intersection at Morphett and Wright Streets.
- Greening and paths that frame the inner edges of the square.
- The Northern tri-intersection will commence first, followed by the greening and pedestrian connections.

TIMELINE OF THE WORKS

- Construction work to begin May and be completed by December 2020.

Overall Master Plan



PROJECT NAME Moonta Street Upgrade (City of Adelaide)

COST AND FUNDING CONTRIBUTION

Contribution Source	Amount
Council contribution	TBC
Planning and Development Fund contribution	\$2,000,000
TOTAL PROJECT COST	\$4,000,000*

PROJECT DESCRIPTION

Council is seeking funding to establish Moonta Street as the next key linkage in connecting the Central Market to Riverbank Precinct through north-south road laneways.

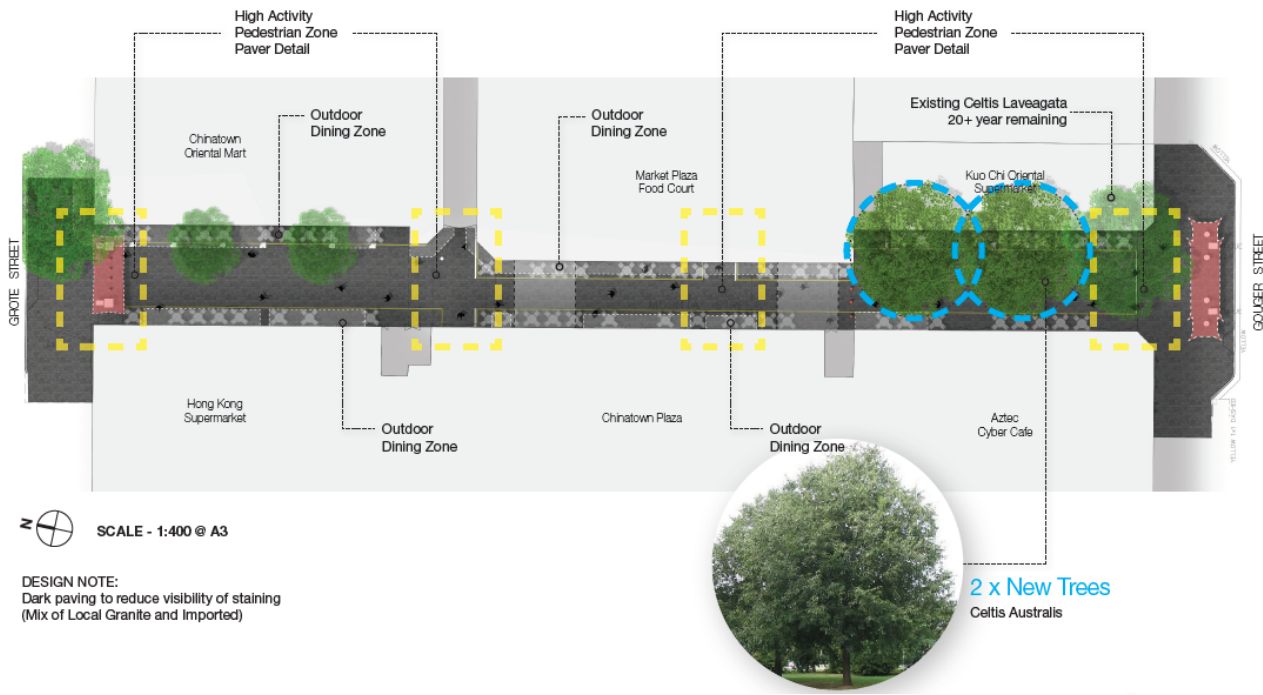
The project involves:

- the installation of quality stone paving throughout and the installation of landscaping to position Moonta Street as a comfortable green promenade and a premium precinct for evening activity.

TIMELINE OF WORKS

- The first stage of this project is detailed design prior to any works on ground commencing.

Moonta Street Reinvigoration
Enhancing the heart of Chinatown



PROJECT Kensington Gardens Reserve Redevelopment (City of Burnside)

COST AND FUNDING CONTRIBUTION

Contribution Source	Amount
Council contribution	\$6,376,846
Planning and Development Fund contribution	\$850,000
TOTAL PROJECT COST	\$7,226,846

PROJECT DESCRIPTION

Kensington Gardens Reserve (KGR) is the largest recreational area in the City of Burnside and spans nearly 16 hectares. In 2018 The Reserve Masterplan was approved and identifies a range of improvements to increase the functionality and amenity of the Reserve. In conjunction with approved federal funding the project includes:

- Installation of a 1.7km shared walking/running “parkrun” track.
- Two new bridge crossings over Stonyfell Creek that will improve public access.
- Landscaping and biodiversity plantings.
- Installation of a new accessible boardwalk over a new wetland that will replace Beckes Lake.

TIMELINE OF WORKS

- Site Preparation and Construction - July 2020 to May 2021.



PROJECT Thorndon Park to Reservoir Road Trail (Campbelltown City Council)

COST AND FUNDING CONTRIBUTION

Contribution Source	Amount
Council contribution	\$60,000
Planning and Development Fund contribution	\$60,000
TOTAL PROJECT COST	\$120,000

PROJECT DESCRIPTION

A formal trail from Thornden Park to Reservoir Road Reserve in Paradise via the Campbelltown Community Orchard. . A formalised trail surface is needed (in the form primarily of permeable pavers as well as crushed stabilised path where relevant) to ensure suitability for a wider range of users.

TIMELINE OF WORKS

- Construction period commencing in October / November 2020.



PROJECT NAME Fourth Creek Trail Project (Campbelltown City Council)

COST AND FUNDING SUMMARY

Contribution Source	Amount
Council contribution	\$185,000
Planning and Development Fund contribution	\$100,000
TOTAL PROJECT COST	\$285,000

PROJECT DESCRIPTION

The Fourth Creek Trail Redevelopment project will improve the pathway connectivity along the Fourth Creek Trail, increase canopy cover and enhance the amenity and biodiversity corridor of the creek line in Campbelltown Council. The project involves:

- Improved trail linkages, wider pathway, new trail surfaces and optimal trail alignment and surfaces for pedestrians and bicycles.
- New seating, shading, street crossings, water fountain and wayfinding strategies.

TIMELINE OF WORKS

- It is anticipated that this project will commence in July 2020.



FOURTH CREEK



BEFORE



AFTER

PRECEDENT CREEK REVITALISATION PROJECT

PROJECT NAME Breakout Creek Stage 3 Redevelopment (City of Charles Sturt)

COST AND FUNDING CONTRIBUTION

Contribution Source	Amount
Council contribution	\$2,000,000
Other contribution - Australian Federal Government Adelaide and Mount Lofty Ranges NRM Board (transitioning to Green Adelaide) City of West Torrens	\$8,000,000
Planning and Development Fund contribution	\$2,000,000
TOTAL PROJECT COST	\$12,000,000

PROJECT DESCRIPTION

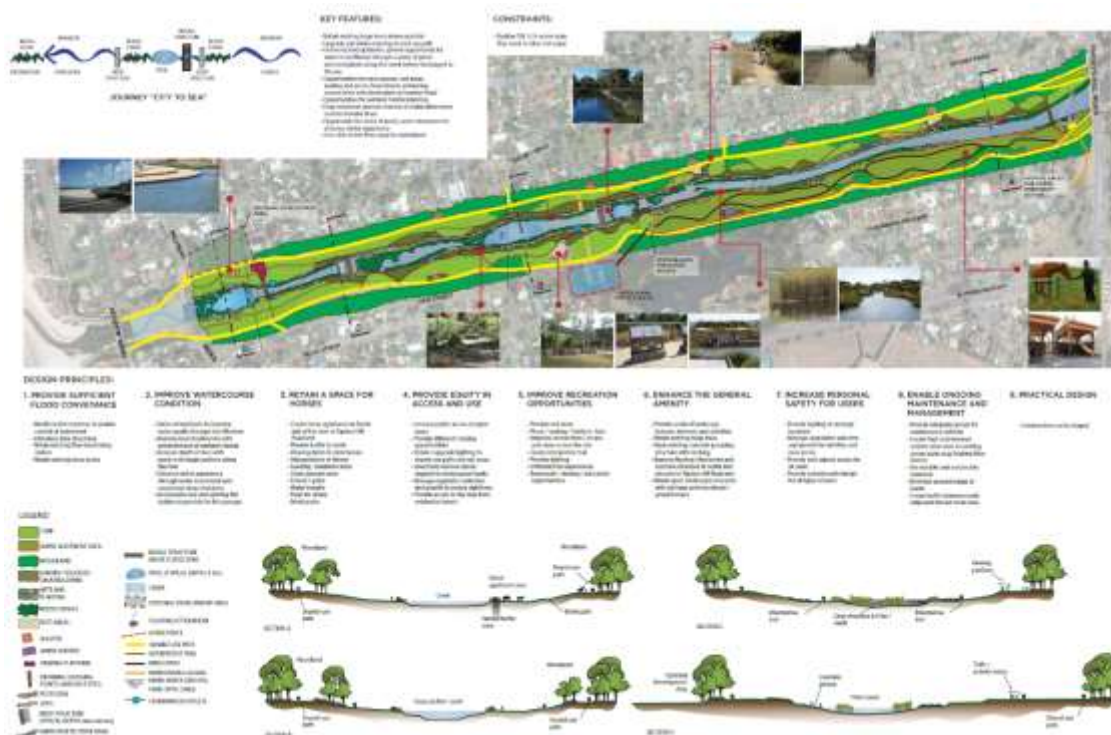
This project will form the jewel in the crown of the rehabilitation and restoration of Adelaide's iconic urban waterway, the River Torrens. The project involves:

- The improvement of accessibility through a range of strategies including crossings and lighting.
- Providing sufficient flood conveyance.
- Establishment of wetland habitat to improve local biodiversity

This is a joint project with the City of West Torrens and the Adelaide and Mount Lofty Ranges NRM Board (transitioning to Green Adelaide). The City of West Torrens has also secured \$2 million for its adjoining section.

TIMELINE OF WORKS

- Construction will be ready to begin December 2020.



PROJECT NAME Wigley Reserve Playspace and Fitness Hub (City of Holdfast Bay)

COST AND FUNDING CONTRIBUTION

Contribution Source	Amount
Council contribution	\$ 500,000
Planning and Development Fund contribution	\$ 500,000
TOTAL PROJECT COST	\$ 1,000,000

PROJECT DESCRIPTION

Construction of the Wigley Reserve Playspace and Fitness Hub. The current site is reaching the end of its asset life and would benefit from an upgrade.

TIMELINE OF WORKS

- Construction to commence April 2020 to 30 September.



PROJECT NAME Marino Coastal Walkway (City of Marion)

COST AND FUNDING CONTRIBUTION

Contribution Source	Amount
Council contribution	TBC
Planning and Development Fund contribution	\$140,000
TOTAL PROJECT COST	\$2, 440,000

PROJECT DESCRIPTION

Council is seeking funding for renewal and upgrade of two key sections of the Coastal Walkway between Marino and Hallett Cove.

The project involves:

- The total rebuild of sections to cross gully areas at Kurnabinna and Grey Road; and
- Completing the Walkway between Heron Way Reserve and the mouth of the Field River.

TIMELINE OF WORKS

The initial stage in this project is additional planning and detailed design prior to any works on ground commencing.

This project will be a multi-stage project over 3 years. Note: the overall project cost on completion will be \$4.88 million (50:50 shared contribution with the City of Marion).



COST AND FUNDING CONTRIBUTION

Contribution Source	Amount
Council contribution	\$735,000
Planning and Development Fund contribution	\$735,000
TOTAL PROJECT COST	\$1,470,000

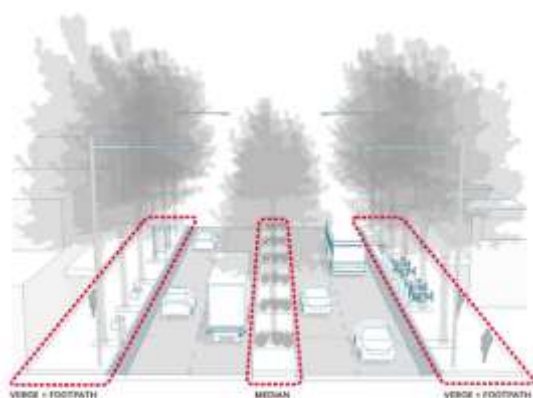
PROJECT DESCRIPTION

Greening and improving the pedestrian experience through the following two streetscape upgrades:

- Diagonal Road (Sturt to Trott Grove)
- Diagonal Road (Trott Grove to Crew Street)

TIMELINE FOR PROJECT

- Construction ready to begin July 2020 and completed within 12 months



The streetscape upgrades will include the following scope:

- Footpath paving
- Verges + median treatment
- Furniture
- Street trees
- Planting + Water Sensitive Urban Design
- Lighting
- Signage + Wayfinding
- Public art



COST AND FUNDING CONTRIBUTION

Contribution Source	Amount
Council contribution	\$40,000
Planning and Development Fund contribution	\$40,000
TOTAL PROJECT COST	\$80,000

PROJECT DESCRIPTION

Establish an avenue of 160 mature trees along a newly established shared path through 3 connected open space reserves in Sheidow Park. The shared path has created a safe and efficient trail for students and parents to travel to and from the Woodend Primary School, who would benefit greatly from planting mature trees adjacent to the path. Thus, creating shade providing a cooling and improved amenity for users. Greenery is a high priority for families in the City of Marion.

TIMELINE FOR WORKS

- Installation will start within 2 months (September 2020).



PROJECT NAME Pasadena Biodiversity Recreation Trail (City of Mitcham)

COST AND FUNDING CONTRIBUTION

Contribution Source	Amount
Council contribution	\$682,500
Planning and Development Fund contribution	\$100,000
TOTAL PROJECT COST	\$782,500

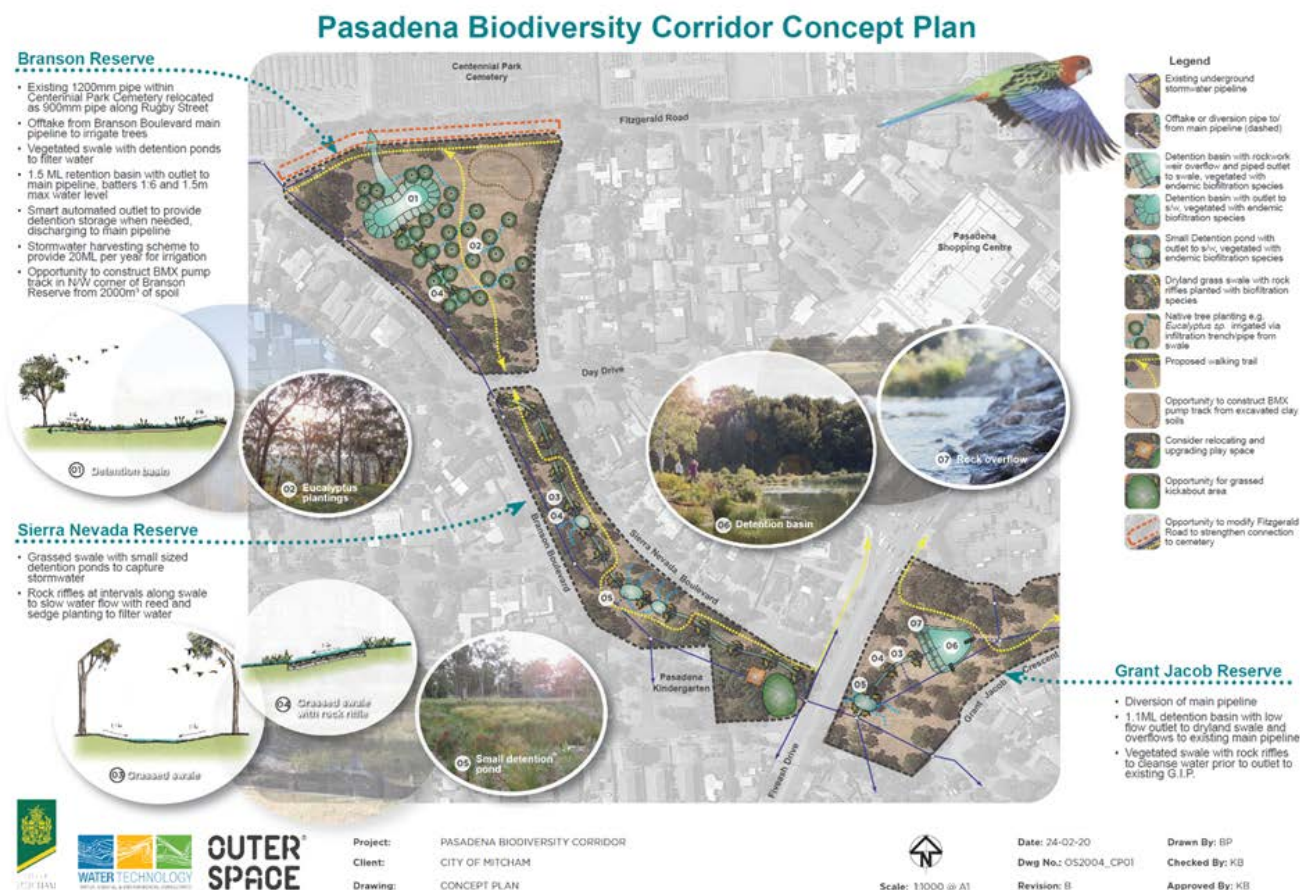
PROJECT DESCRIPTION

The project brings stormwater flows from the underground drainage pipes within the reserves to the surface to create a lush, green, passively irrigated recreation space that creates a biodiversity corridor linking the Hills to the Plains. The project includes:

- Developing green space with hundreds of new trees and native vegetation.
- Create a native Kuarna edible garden.
- Re-direct stormwater flows from the underground drainage pipes within the reserves to the surface to create a lush, green, passively irrigated recreation space.
- Create a biodiversity corridor

TIMELINE FOR WORKS

- Construction to commence in November 2020.



PROJECT NAME Dorene Street Shadeway (City of Mitcham)

COST AND FUNDING CONTRIBUTION

Contribution Source	Amount
Council contribution	\$1,025,000
Planning and Development Fund contribution	\$75,000
TOTAL PROJECT COST	\$1,100,000

PROJECT DESCRIPTION

Reconstructing the road to become a Shadeway which will provide a landscaped road reserve with dense canopy cover trees to provide 100% shade in summer for all users and integrate the space to link with local reserves. The current road will be converted to a 'park that has cars', and make it a shared space for people, plants, trees, public art, and bikes.

The project involves:

- Dedicated shared use path and bikeway (shadeway) for the new Flinders-City bikeway.
- Improved footpath network with a focus on pedestrian crossing points and safety.
- Linkage to adjoining reserves.
- Increase overall canopy cover of the area.

TIMELINE

- Construction to commence in November 2020.



PROJECT NAME Littlehampton Greening (District Council Of Mount Barker)

COST AND FUNDING CONTRIBUTION

Contribution Source	Amount
Council contribution	\$400,000
Planning and Development Fund contribution	\$400,000
TOTAL PROJECT COST	\$800,000

PROJECT DESCRIPTION

Develop two parcels of land within Littlehampton and Blakiston, one is the Glebe Land and the second is Miels Park. The Greening Littlehampton project will create two unique but quite different areas of open space for Littlehampton, providing a range of community, recreation and civic facilities across both spaces. The Glebe Land will provide a large, open and quiet space for informal recreation activities, families and quiet reflection. The upgrade of Miels Park will create a high amenity civic space in the centre of the town.

TIMELINE OF WORKS

- Estimated start date - July 2020.

Glebe Concept Plan



- New Pedestrian Paths**
 - New outdoor path to be used to create a new path and to be used as a walking path and to be used as a walking path.
- New Landscaping and Access Gates**
 - Rebuild surface car park to existing design.
- Speed Restriction**
 - Rebuild 100km/h speed limit to 100km/h.
- Improved Drain Quality**
 - New stormwater drain to be used to improve drainage and water quality. Include new to create a new drainage system.
- Turf Block**
 - A new outdoor turf block to be used as a turf block.
- New Pathway to Old Police Station**
 - Rebuild 100km/h speed limit to 100km/h.
- Turf Block and Space**
 - New outdoor turf block to be used as a turf block.
- Rebuild Play Elements**
 - Rebuild outdoor play area to be used as a play area.
- Play Area and Space**
 - New outdoor play area to be used as a play area.



PROJECT NAME Witton Bluff Base Trail (City of Onkaparinga)

COST AND FUNDING CONTRIBUTION

Contribution Source	Amount
Council contribution	\$2,650,000
Planning and Development Fund contribution	\$2,650,000
TOTAL PROJECT COST	\$5,300,000

PROJECT DESCRIPTION

Establish the Witton Bluff Base Trail which involves the creation of a 1.37km section of accessible pathway around Witton Bluff, between the foreshore at Christies Beach and Port Noarlunga.

This project involves:

- Upgrade of the existing unsealed pathway from Christies Beach to the wave-cut shelf to a 3-metre-wide (4m including 0.5m shoulders) DDA compliant shared-use path.
- A new DDA compliant boardwalk above the wave-cut shelf designed to accommodate both pedestrians and cyclists.
- New and formalised viewing areas and pedestrian and cyclist access connections to adjoining shared path and cycle networks.
- New landscaping and revegetation with local indigenous species suitable to the coastal environment, along with interpretive signage, trail lighting and furniture and public art.

TIMELINE OF WORKS

- It is anticipated that this project will commence by December 2020.

Witton Bluff Base Trail
Attachment 1 - Project Location - Port Noarlunga



PROJECT NAME **Virginia Main Street Upgrade (City of Playford)**

FUNDING SUMMARY

Contribution Source	Amount
Council contribution	\$ 3,630,397
Planning and Development Fund contribution	\$ 2,656,895
TOTAL PROJECT COST	\$6,287,292

PROJECT DESCRIPTION

The Virginia Main Street Upgrade aims to create a vibrant, safe and attractive town centre for a growing community, local businesses and visitors, along with improved pathway connections. The new upgrade will include:

- The new shared pedestrian and cycle path, pedestrian crossings, continuous footpath treatments, wayfinding signage and street furniture.
- Increased public realm.
- Water sensitive urban designs.
- New street trees.
- Redevelopment of Institute Park.

TIMELINE OF WORKS

- Construction to commence December 2020.



PROJECT NAME McLaren Parade Shared Space and streetscape (Port Adelaide Enfield)

COST AND FUNDING CONTRIBUTION

Contribution Source	Amount
Council contribution	\$600,000
Planning and Development Fund contribution	\$600,000
TOTAL PROJECT COST	\$1,200,000

PROJECT DESCRIPTION

The project is to transform McLaren Parade (within a State Listed heritage area) into a shared space to create a more pedestrian friendly environment to provide better accessibility and urban design outcomes. A 180 room, 6 storey hotel is being constructed in the street which provides a fantastic opportunity to upgrade the street to ensure integration with the proposed development.

The project includes:

- Improving the canopy cover.
- Integrate footpath with roadway.
- Remove kerb and water table.

TIMELINE OF WORKS

- Estimated construction date November 2020.



Draft concept – McLaren Parade – Shared Space and streetscape upgrade



PROJECT NAME Prospect Gardens / Narnu Wirra Redevelopment (City of Prospect)

COST AND FUNDING CONTRIBUTION

Contribution Source	Amount
Council contribution	\$218,500
Planning and Development Fund contribution	\$218,500
TOTAL PROJECT COST	\$437,000

PROJECT DESCRIPTION

Deliver Prospect Gardens/Narnu Wirra Redevelopment at Nailsworth. The park is a large recreation area of 9,000 sqm and the project calls for a new playground, fitness equipment, nature play, dinosaur fossil discovery trail, sensory musical panel, furniture, entry statement, lighting, pavement, and amenity planting.

TIMELINE OF WORKS

- Site Demolition to begin in October 2020 and construction to commence in November 2020.

PROSPECT GARDENS / NARNU WIRRA - CONCEPT PLAN v2



PROJECT NAME Churchill Road Streetscape Upgrade (City of Prospect)

COST AND FUNDING CONTRIBUTION

Contribution Source	Amount
Council contribution	\$750,000
Planning and Development Fund contribution	\$750,000
TOTAL PROJECT COST	\$1,500,000

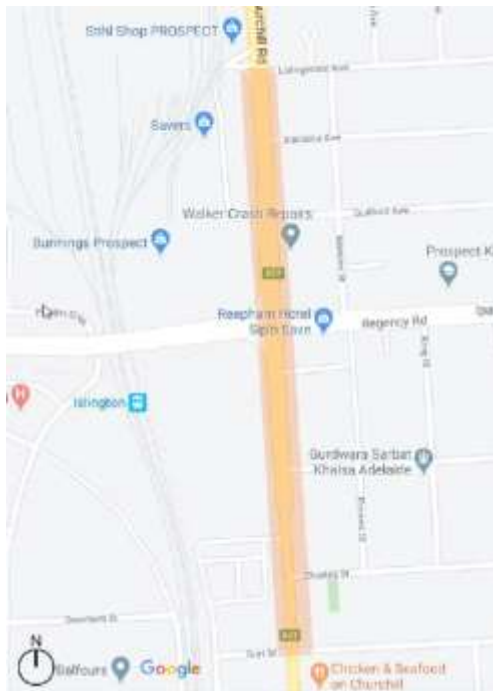
PROJECT DESCRIPTION

Complete the final stage of the Churchill Road Streetscape Upgrade (Stage 3 of 3) which commenced via Masterplan developed in 2009. This project involves:

- Moving forward to the final stage of the Churchill Road Streetscape Upgrade (stage 3 out of 3). The concept design has already been completed and detailed design is underway.
- New paved footpaths, kerb and gutter, stormwater management, indented parking, indented bus bays, pedestrian refuges, continuation of bike land, and tree and vegetation planting.

TIMELINE OF WORKS

- Construction to commence in October 2020 and take 6 months.



PROJECT NAME Native Forest Little Para Catchment (City of Salisbury)

COST AND FUNDING CONTRIBUTION

Contribution Source	Amount
Council contribution	\$200,000
Planning and Development Fund contribution	\$200,000
TOTAL PROJECT COST	\$400,000

PROJECT DESCRIPTION

Funding to plant 10,000 native trees along the Little Para River and Catchment which will see the enhancement of the natural open space and vegetation associated with this corridor. This will improve the canopy cover within the city and enhances and conserves natural habitat, so no net loss of species is seen. The increase in shade from these trees will see the Little Para River Corridor as an alternate transport corridor to the existing City-Wide Trail located within this corridor. This project involves planting 10,000 trees along the Little Para River and Catchment within four months of approval.

TIMELINE OF WORKS

- Planting and preparation works will begin by June 2020

No image supplied

PROJECT NAME Green Trails Program (City of Salisbury)

COST AND FUNDING CONTRIBUTION

Contribution Source	Amount
Council contribution	\$500,000
Planning and Development Fund contribution	\$500,000
TOTAL PROJECT COST	\$1,000,000

PROJECT DESCRIPTION

The next stage of the multi-staged project, known as the City-Wide Trails Program, which involves upgrading the existing trail network along Little Para River and Dry Creek as well as the establishment of new trails in areas where the trail does not exist. The project will encourage and provide opportunities for recreation (e.g. walking and cycling) and commuters to get from one place to another.

TIMELINE OF WORKS

- Construction will begin in November 2020



PROJECT NAME **Dry Creek Corridor Stage 1 Edinburgh Reserve (City of Tea Tree Gully)**

COST AND FUNDING CONTRIBUTION

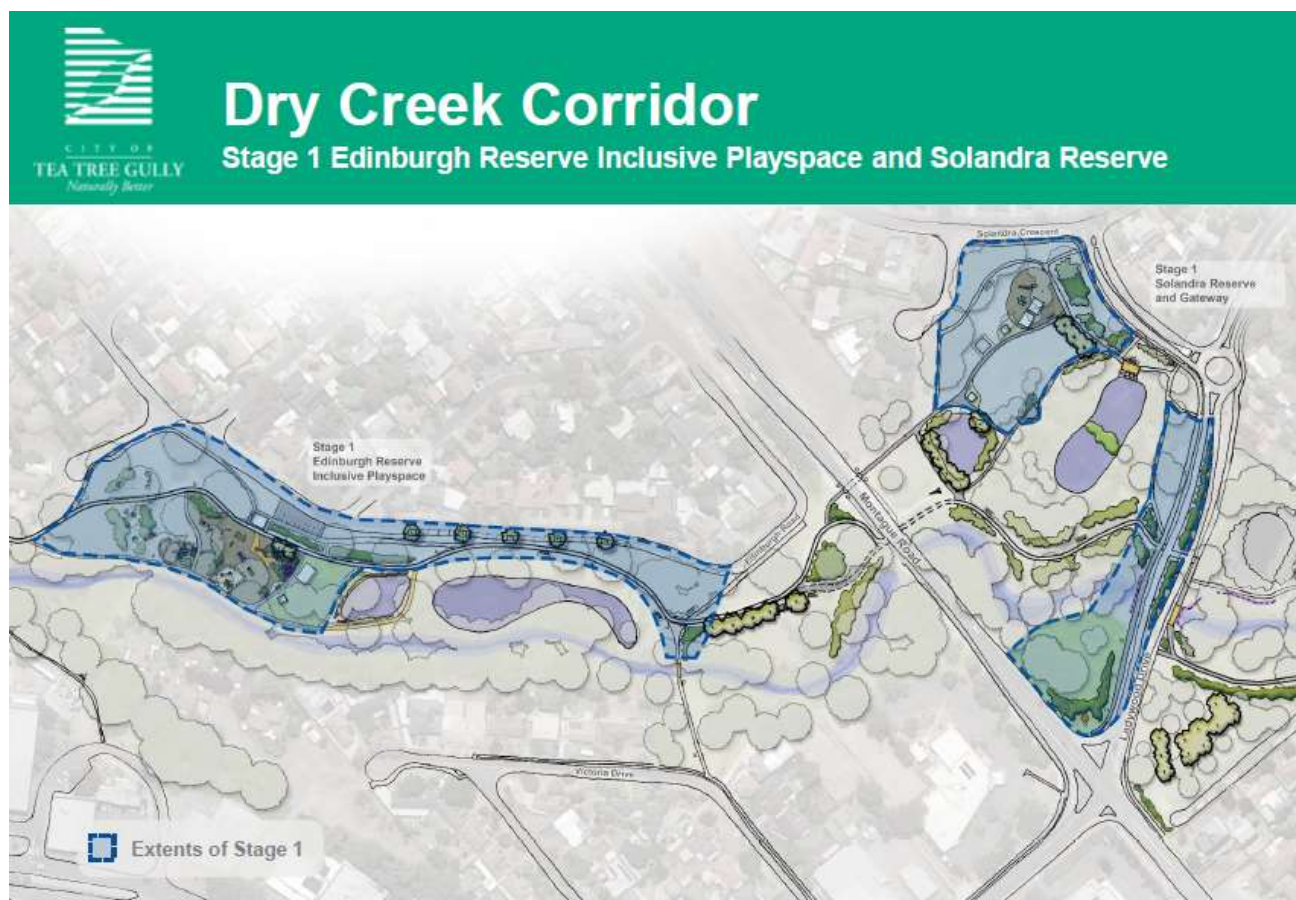
Contribution Source	Amount
Council contribution	\$895,000
Planning and Development Fund contribution	\$850,000
TOTAL PROJECT COST	\$1,745,000

PROJECT DESCRIPTION

Commence Stage 1 of the Dry Creek Corridor Master Plan (“the Plan”) including an inclusive playground at Edinburgh Reserve and open space and recreational upgrade to Solandra Reserve. Informed by the community, the plan identifies priority projects that seek to enhance the open space network and recreational assets for all ages and abilities for now and into the future.

TIMELINE OF WORKS

- Construction to commence in January until June 2021



PROJECT NAME Meadowvale Inclusive Precinct (City of Tea Tree Gully)

COST AND FUNDING CONTRIBUTION

Contribution Source	Amount
Council contribution	\$441,500
Other contribution	\$375,000
Planning and Development Fund contribution	\$750,000
TOTAL PROJECT COST	\$1,566,500

PROJECT DESCRIPTION

This project seeks to improve pedestrian connections for the overall community along the Meadowvale corridor, but in particular older residents who prefer walking along the linear parks and creek lines, rather than streets, to improve way-finding signage (dementia-friendly), to provide nodes for resting and recreation and activities that promote inter-generational interaction. Increasing planting to provide additional shade space.

This project includes:

- New and accessible wayfinding strategies.
- Protecting and enhance the current bushland and creek setting.

TIMELINE FOR WORKS

- Construction to commence in January 2021.



COST AND FUNDING CONTRIBUTION

Contribution Source	Amount
Council contribution	\$240,000
Planning and Development Fund contribution	\$170,000
TOTAL PROJECT COST	\$410,000

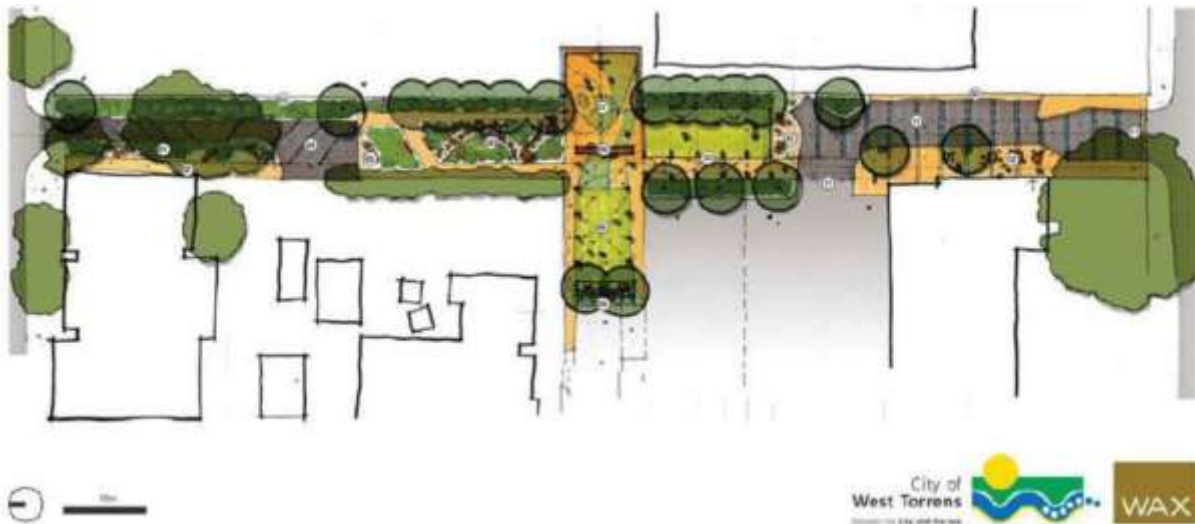
PROJECT DESCRIPTION

Redevelopment of the existing pocket park. The project involves:

- Native Plantings and Nature Play.
- Modified surface treatments to promote shared use and provide cycle lane.
- increased footpath and outdoor dining and bike parking.
- Half court and activity wall.
- Rain garden with paths and seating.
- Art screen to car park and industrial edge.

TIMELINE OF WORKS

- Construction to commence mid July 2020 with completion in December 2020.



COST AND FUNDING CONTRIBUTION

Contribution Source	Amount
Council contribution	\$2,000,000
Other contribution	\$8,000,000
Planning and Development Fund contribution	\$2,000,000
TOTAL PROJECT COST	\$12,000,000

PROJECT DESCRIPTION

This project will form the jewel in the crown of the rehabilitation and restoration of Adelaide's iconic urban waterway, the River Torrens. The project involves:

- The improvement of accessibility through a range of strategies including crossings and lighting.
- Providing sufficient flood conveyance.
- Establishment of wetland habitat to improve local biodiversity.

This is a joint project with the City of West Torrens and the Adelaide and Mount Lofty Ranges NRM Board (transitioning to Green Adelaide). The City of West Torrens has also secured \$2 million for its adjoining section.

TIMELINE OF WORKS

- Construction will be ready to begin December 2020.

