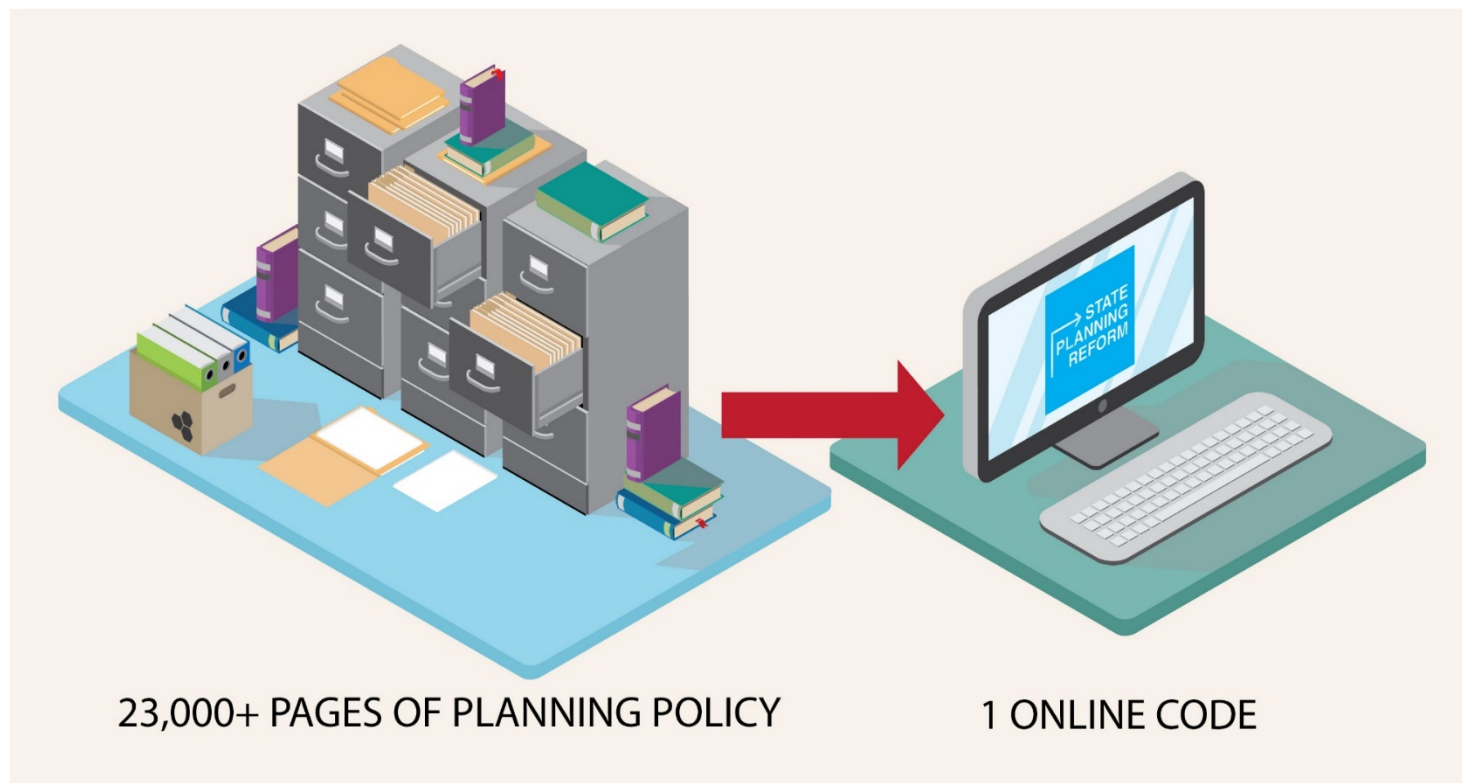


# MAPPING TOOL GUIDE




During the consultation period we have developed a draft Planning and Design Code Consultation Mapping Tool that can be used to look-up specific addresses, zones and overlays.

# How to search by a specific address to view zones and overlays of interest

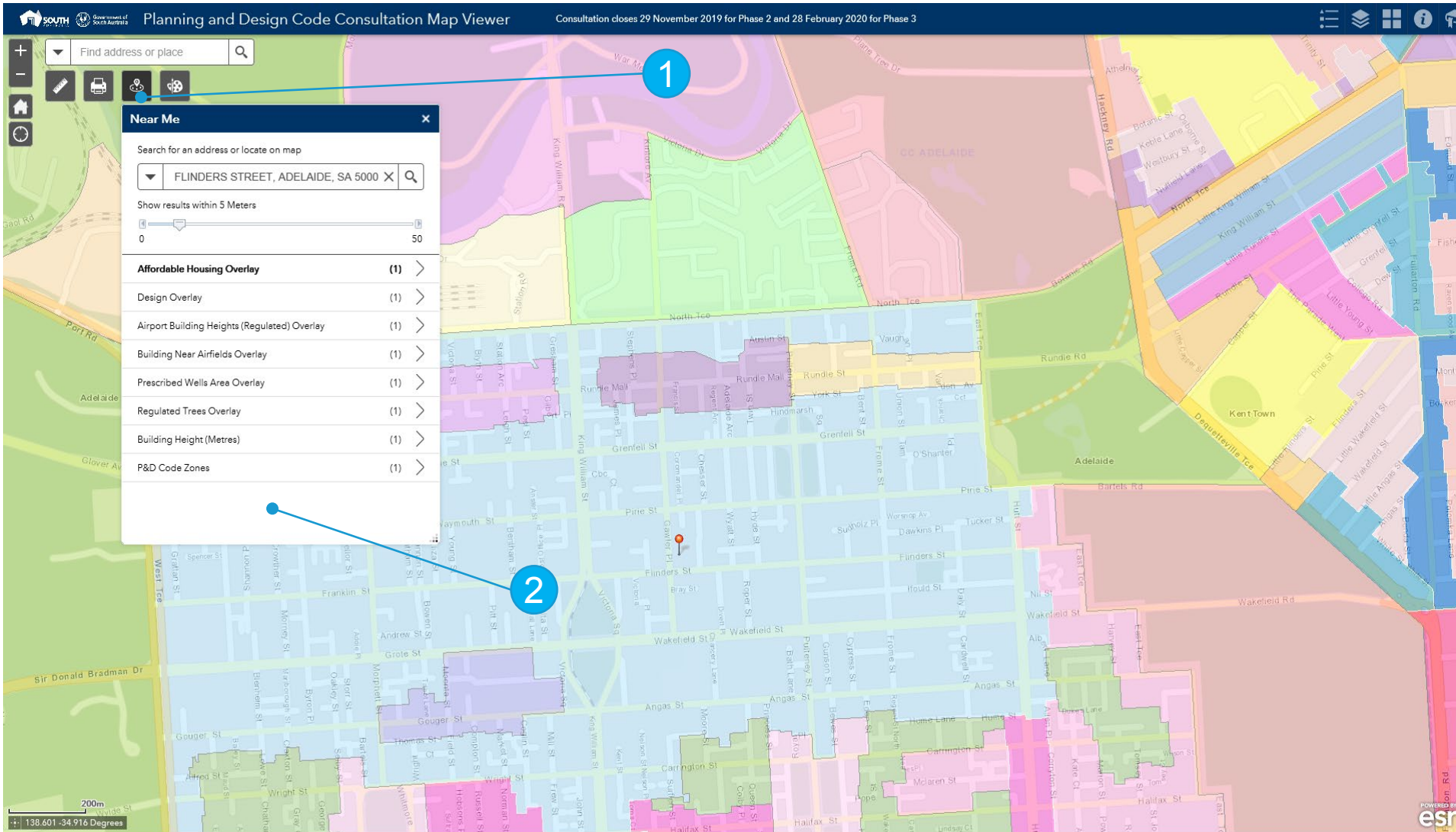
Go to the **SA Portal** to use the Mapping Tool:

[www.saplanningportal.sa.gov.au](http://www.saplanningportal.sa.gov.au)

**Search** specific addresses:


1. Search for the **Location** in Near Me  or **zoom** into an area of the map.

2. View results for zones and overlays of specific address






**Planning and Design Code Consultation Map Viewer**

1. Search for the **Location** in the Near Me  or **zoom** into an area of the map.

2. Click on the **Layers** icon to show the list.

3. Click on the **Zones** checkbox to turn off the P&D Code Zones.

4. Click on the  **Search** icon.

5. Type **search word** in the search field, e.g. **historic** and list of matching results display.

6. Click on **top-level Layers** checkboxes to apply the selected layers.

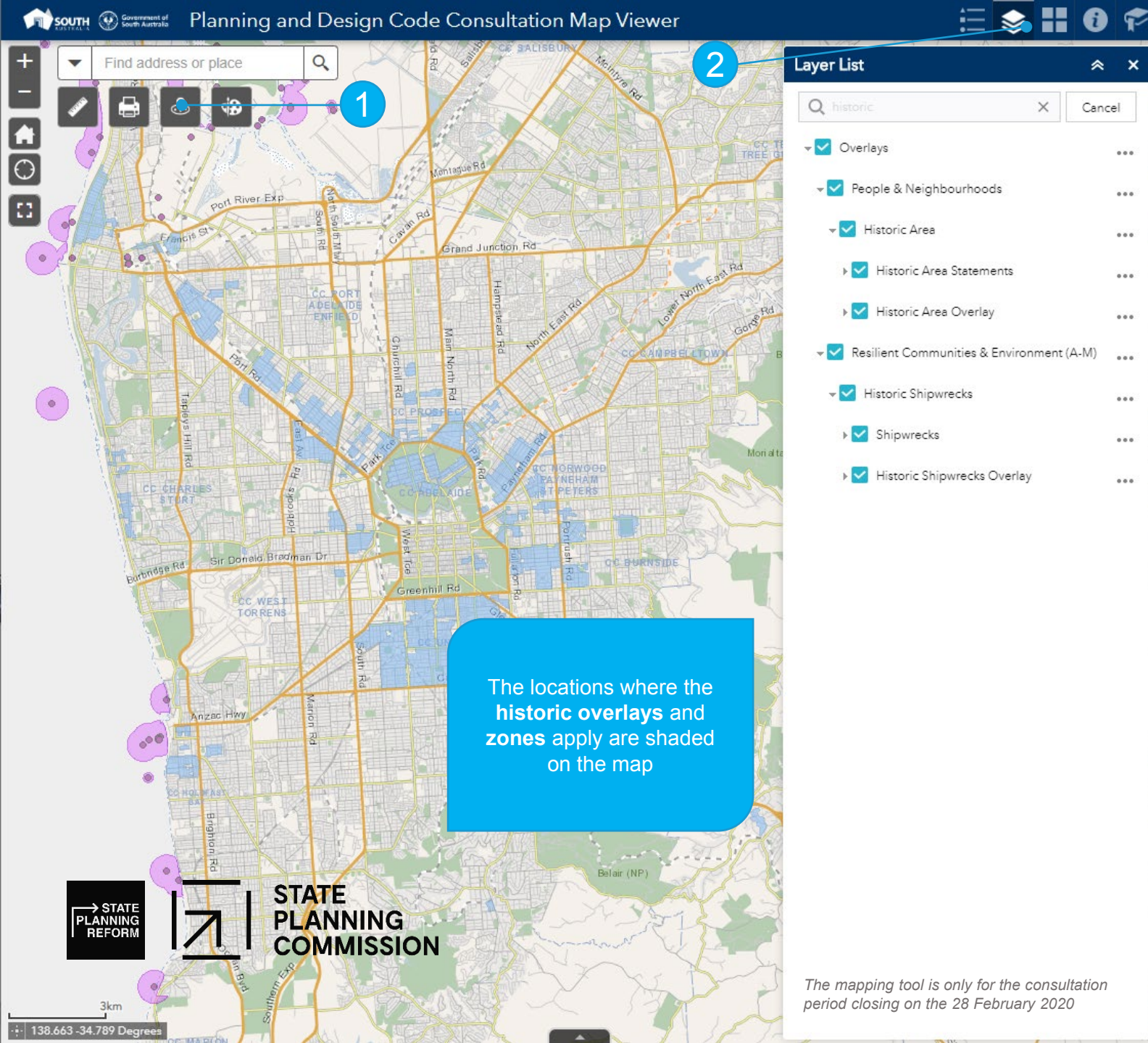
The locations where the **historic overlays** and **zones** apply are shaded on the map

**STATE PLANNING COMMISSION**


STATE PLANNING REFORM

138.663 -34.789 Degrees

The mapping tool is only for the consultation period closing on the 28 February 2020




## How to search by a key word to select and view layers of interest

1. Search for the **Location** in the Near Me  or **zoom** into an area of the map.

2. Click on the **Layers** icon to show the list.

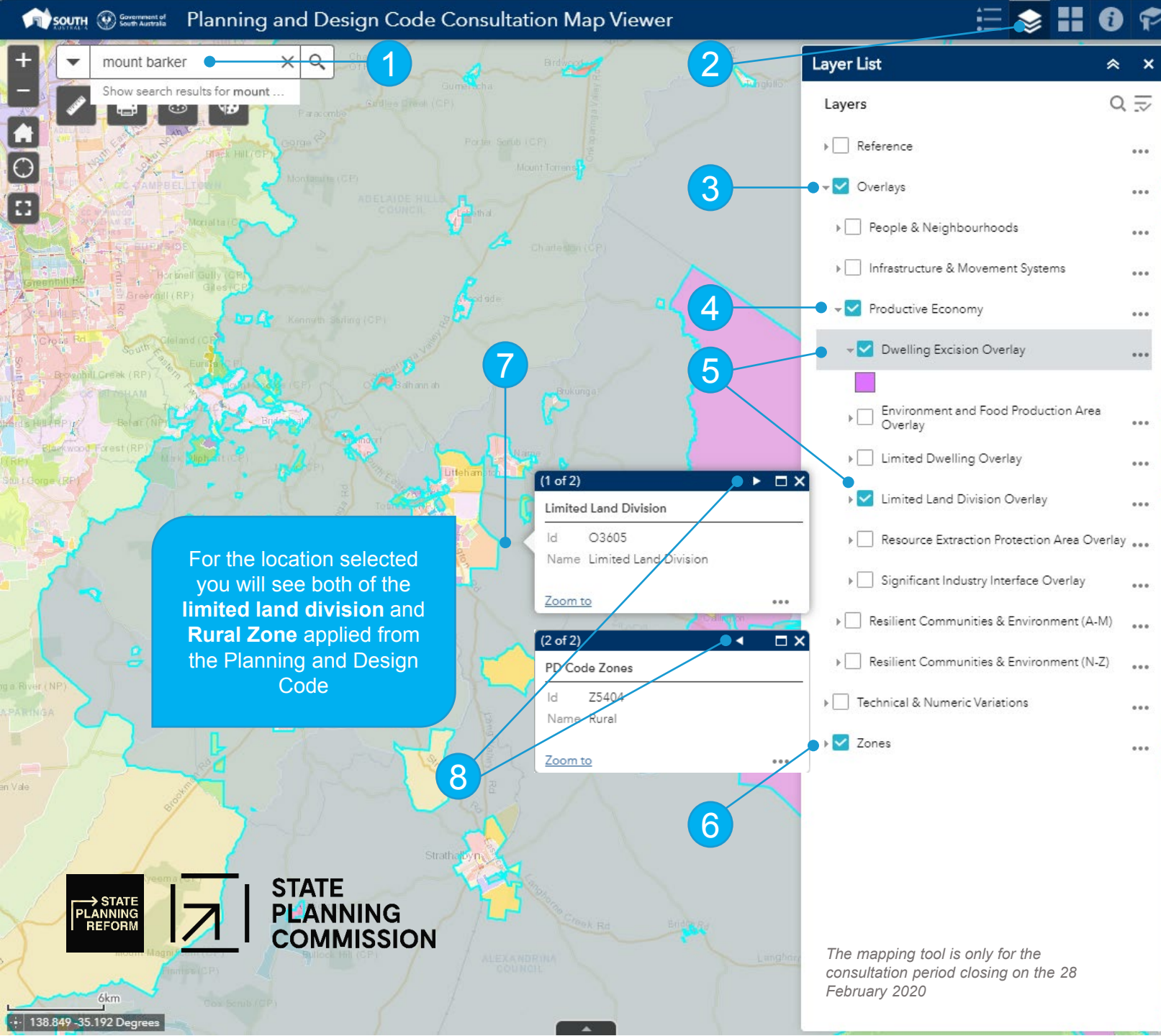
3. Click on the **Zones** checkbox to turn off the P&D Code Zones.

4. Click on the  **Search** icon.

5. Type **search word** in the search field, e.g. **historic** and list of matching results display.

6. Click on **top-level Layers** checkboxes to apply the selected layers.






## How to use the **Overlays** layer to show the Productive Economy policy themed overlays

1. Search for the **Location**, or **zoom** into an area of the map.

2. Click on the **Layers** icon to show the list.

3. Click on the **Overlays** checkbox to select, then expand to show the listing of policy interests

 The top-level e.g. **Overlays** checkbox must be selected to show the selections made in the next steps.

4. Click on the policy theme of interest checkbox, e.g. **Productive Economy**.

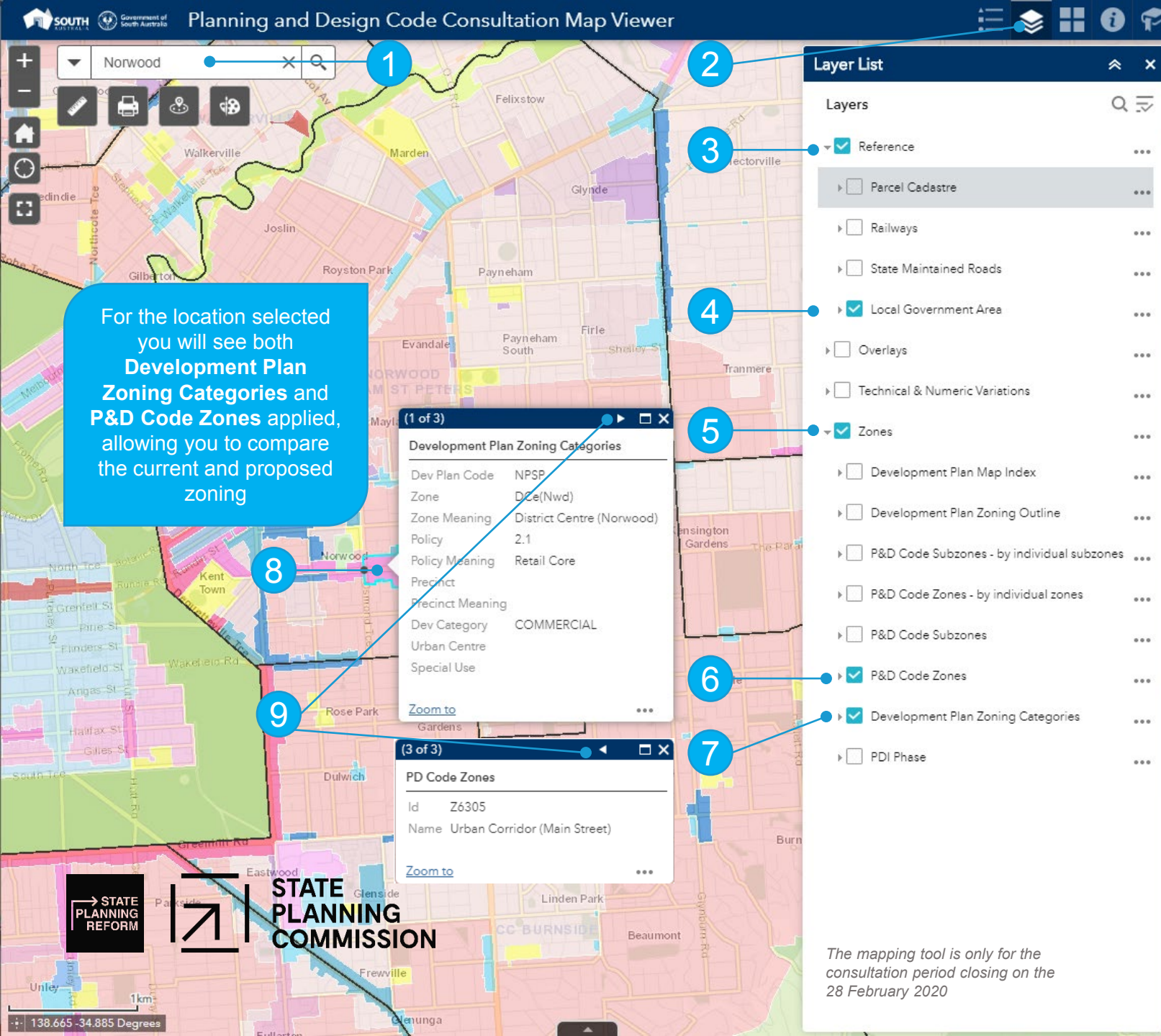
5. Click on each of the overlays to shade on the map, e.g. **Dwelling Excision Overlay**, and **Limited Land Division Overlay**.

 Expand the **Overlay** to display the colour shaded on the map.

6. Leave the **Zones** checkbox selected to show all zones shaded on the map.

7. Left click mouse within the overlay area to **display** the **overlay details** applied to this location.

8. Click on the ► **Next** icon to view more details or click on the ◀ **Back** icon to view the previous details.




## How to use the Reference and Zones Layers

For outlining the **Local Government Area** and **Development Plan Zoning Categories** to compare existing zone, policy and precincts against the proposed **P&D Code zones**

1. Search for the **Location**, or **zoom** into an area of the map.

2. Click on the **Layers** icon to show the list.

3. Click on the **Reference** checkbox to select, then expand to show the listing of references.

 The top-level e.g. **Reference** checkbox must be selected to show the selections made in the next steps.

4. Click on the **Local Government Area** to show an outline of the area on the map.

5. Expand the **Zones** list to show all options.

6. Leave the **P&D Code Zones** layer selected to show all zones shaded on the map.

7. Click on the **Development Plan Zoning Categories** checkbox to show the existing zones.

8. Left click mouse within the layer area to **display** the **Development Plan** and **P&D Code zones** applied to this location.

9. Click on the ► **Next** icon to view more details or click on the ◀ **Back** icon to view the previous details.

10. Click on the **P&D Code Zones** checkbox to turn-off the zones to only show the Development Plan Zoning Categories, click on the **P&D Code Zones** checkbox to turn-on.



**Planning and Design Code Consultation Map Viewer**

1. Search for the **Location**, or **zoom** into an area of the map.

2. Click on the **Layers** icon to show the list.

3. Click on the **Technical & Numeric Variations** checkbox to select, then expand to show the listing of variations.

4. Click on the technical & numeric variations of interest, e.g. **Building Heights (storeys)**.

5. Expand the **Zones** list to show all options.

6. Leave the **P&D Code Zones** checkbox selected to show all zones shaded on the map.

7. Left click mouse on an area of the map to **display** the **technical and numeric details**, and **zones details** applied to this location.

8. Click on the **Next** icon to view more details or click on the **Back** icon to view the previous details.


For the location selected you will see both **Building Height (storeys)** and **Zones** applied from the Planning and Design Code

**STATE PLANNING REFORM** **STATE PLANNING COMMISSION**

The mapping tool is only for the consultation period closing on the 28 February 2020

# How to use the Technical & Numeric Variations and Zones layers to identify building heights within the General and Urban Renewal Neighbourhood Zones

1. Search for the **Location**, or **zoom** into an area of the map.
2. Click on the **Layers** icon to show the list.
3. Click on the **Technical & Numeric Variations** checkbox to select, then expand to show the listing of variations.

 The top-level e.g. **Technical & Numeric Variations** checkbox must be selected to show the selections made in the next steps.

4. Click on the technical & numeric variations of interest, e.g. **Building Heights (storeys)**.
5. Expand the **Zones** list to show all options.
6. Leave the **P&D Code Zones** checkbox selected to show all zones shaded on the map.
7. Left click mouse on an area of the map to **display** the **technical and numeric details**, and **zones details** applied to this location.
8. Click on the **Next** icon to view more details or click on the **Back** icon to view the previous details.