

# STYLE IDENTIFICATION ADVISORY GUIDELINES



## Introduction

Development in South Australia is assessed against the state-wide Planning and Design Code (the Code). The Code can be accessed on the PlanSA portal and is an electronic database that can be searched by address or development type.

The Code contains Zones, Subzones and Overlays for the assessment of development. The Overlays are of significance in that they can alter the way development applications are assessed.

Within the Code, Historic Area Overlays and Character Area Overlays identify locations that display historic themes, streetscape characteristics and/or development patterns of importance and value to the local area. These attributes are identified in the **Historic Area Statements** and **Character Area Statements** supporting the Overlays, and are generally expressed as an era / period of development, or prevailing architectural type or style. Some Historic Area Overlays also include the identification of **Representative Buildings** that are examples of historic themes that are of value.

**Design Advisory Guidelines** have been developed to assist applicants and designers to achieve design outcomes consistent with the Code's Desired and Performance Outcomes, namely development is contextually responsive to historic and character attributes.

**Style Identification Advisory Guidelines** provided under Section 66(5) of the *Planning Development and Infrastructure Act 2016* (the Act), support the Design Advisory Guidelines by assisting applicants and designers to identify those historic and character attributes within a streetscape outlined by the Area Statements. It does this through:

- a diagrammatic timeline, that identifies common architectural styles for periods of development identified in the Area Statements, and
- typical examples of the style.

Importantly, it is not possible for a document such as the Style Identification Advisory Guidelines to provide an example of all architectural styles and variants across all Councils in the State. This document provides examples only. The Desired and Performance Outcomes of the Code seek a design response specific to the historic and character attributes of the relevant location.

This is a living document.

# TIMELINE OF STYLES

1840 1850 1860 1870 1880 1890 1900 1910 1920 1930 1940 1950 1960 1970 1980

## RESIDENTIAL

**EARLY SETTLEMENT**  
Workers Cottages | Sheds | Barns | Outbuildings

**EARLY VICTORIAN COTTAGES**  
Single Fronted Cottages  
Double Fronted Cottages | Row Cottages

**EDWARDIAN VILLAS AND COTTAGES**  
Villas | Single Fronted Cottages | Double Fronted Cottages | Return Verandah Villa  
Row Cottages | Terrace Houses

**EDWARDIAN/FEDERATION VILLAS & COTTAGES**  
Double Fronted Cottages | Single Fronted Cottages  
Double Fronted Villa | Return Verandah Villa  
Queen Anne | Art Nouveau

**EARLY INTER-WAR**  
Bungalow | State Bank Bungalow  
Gentleman's Bungalow

**LATE INTER-WAR**  
Spanish Mission | Art Deco/Gable-Fronted Deco  
Old English

**EARLY POST WAR**  
Austerity/War Service Homes | Early Housing Trust

## COMMERCIAL

**EARLY SETTLEMENT**  
Agricultural | Industrial | Retail | Commercial

**EARLY MAINSTREETS/TOWN CENTRES**  
Row Shops | Shop Houses | Shops | Commercial (inc banks)

## PUBLIC

**EARLY SETTLEMENT**  
Libraries | Institutes | Town Halls  
Council Chambers | Railway | Services

**ESTABLISHMENT**  
Libraries | Institutes | Town Halls | Council Chambers  
Railway | Services | Ecclesiastical

# EARLY SETTLEMENT

## Workers cottages, sheds, barns, outbuildings



Walkerville



Prospect



Walkerville



Torrens Valley



Strathalbyn



East Torrens

# EARLY VICTORIAN COTTAGES

## Single-fronted cottages



Walkerville



Prospect



North Adelaide



North Adelaide



# EARLY VICTORIAN COTTAGES

## Double-fronted cottages



Walkerville



Gawler



Mitcham



Mitcham



Unley



Walkerville

# EARLY VICTORIAN COTTAGES

## Row cottages



Gawler



Charles Sturt



Adelaide



Unley



# VICTORIAN VILLAS / COTTAGES

## Villas



Unley



Unley



Walkerville



Unley



Unley



Unley

# VICTORIAN VILLAS / COTTAGES

## Single-fronted villas / cottages



Unley



Prospect



Prospect



Burnside



Unley



Prospect



# VICTORIAN VILLAS / COTTAGES

## Double-fronted cottages / villas



Unley



Mitcham



Walkerville



Mitcham



Burnside



Walkerville

# VICTORIAN VILLAS / COTTAGES

Return verandah / villas



Walkerville



Unley



Mitcham



Walkerville



Walkerville



Unley



# VICTORIAN VILLAS / COTTAGES

## Row cottages



Walkerville



Prospect



Unley



Prospect



# VICTORIAN VILLAS / COTTAGES

## Terrace houses



North Adelaide



Port Adelaide



North Adelaide



North Adelaide

# EDWARDIAN / FEDERATION VILLAS / COTTAGES

## Single-fronted cottages



Unley



Unley



Prospect



Port Adelaide



Prospect



Prospect



# EDWARDIAN / FEDERATION VILLAS / COTTAGES

## Double-fronted cottages



Prospect



Walkerville



Unley



Walkerville



Unley



Unley



# EDWARDIAN / FEDERATION VILLAS / COTTAGES

## Villas



Unley



North Adelaide



North Adelaide



North Adelaide



Unley



Unley

# EDWARDIAN / FEDERATION VILLAS / COTTAGES

## Return verandah villas



Walkerville



Walkerville



Unley



Unley



Prospect



Walkerville



# EDWARDIAN / FEDERATION VILLAS / COTTAGES

## Queen Anne / Art Nouveau



Unley



Walkerville



Unley



Walkerville



Unley



Walkerville



# EARLY INTER-WAR Bungalow



Port Adelaide



Port Adelaide



Walkerville



Unley



Port Adelaide

# EARLY INTER-WAR State Bank bungalow



Port Adelaide



Port Adelaide



St Peters



Mitcham



# EARLY INTER-WAR Gentleman's bungalow



Port Adelaide



Walkerville



Unley



Burnside



Unley



Prospect



# EARLY INTER-WAR

## Tudor revival



Walkerville



Port Adelaide



Burnside



Burnside



Walkerville



Henley

# LATE INTER-WAR

## Spanish mission



Burnside



Unley



Unley



Unley

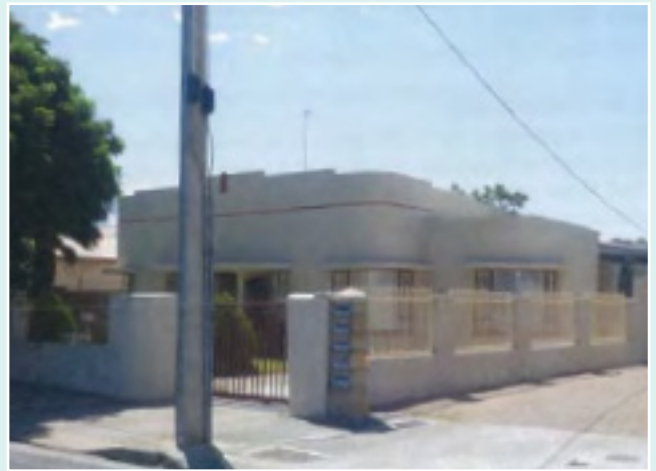


# LATE INTER-WAR

## Art Deco / Gable-fronted deco



Walkerville



Charles Sturt



Walkerville



Burnside



Walkerville



Unley

# LATE INTER-WAR Old English



Burnside



North Adelaide



North Adelaide



Burnside



Charles Sturt



# EARLY POST WAR

## Austerity / War service house



Unley



Unley



Brighton



Burnside



Unley



Salisbury

# EARLY POST WAR

## Early housing trust



Charles Sturt



Brighton



Port Adelaide



Charles Sturt