



Frequently Asked Questions Murray Mallee Regional Plan



Who is the State Planning Commission?

The State Planning Commission (the Commission) is South Australia's leading development assessment and planning advisory body. It provides independent advice on all aspects of planning and development and is responsible for preparing regional plans.



What is a regional plan?

Regional plans set the direction for future planning and development in South Australia, tailored to each region. These plans map out a 15-to-30-year vision, including:



where new housing and jobs should be located



strategies to protect key areas while renewing others



how transport networks should evolve to improve connectivity to major centres and smaller townships



the essential infrastructure needed to support growth



how we can protect biodiversity, cultural heritage and ecosystems



using climate data to mitigate risks from extreme weather events

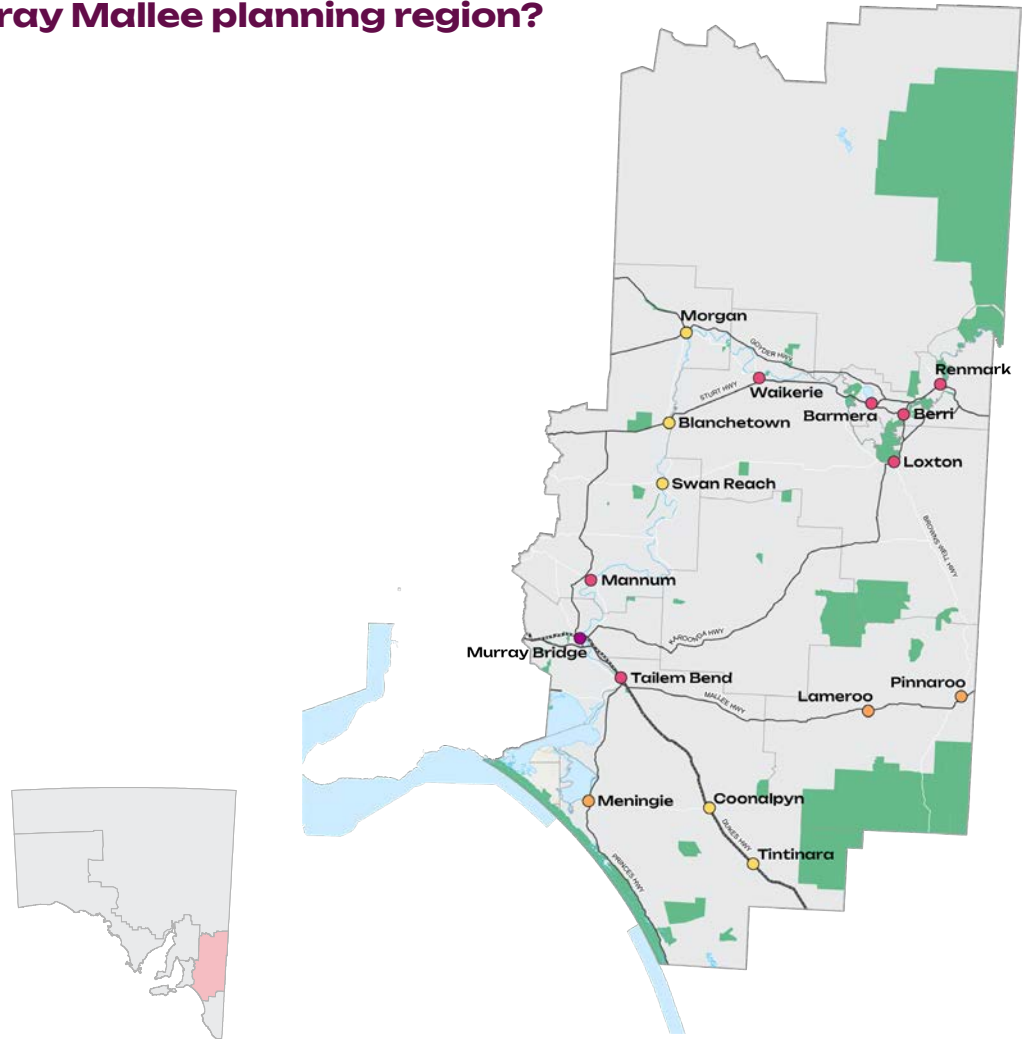
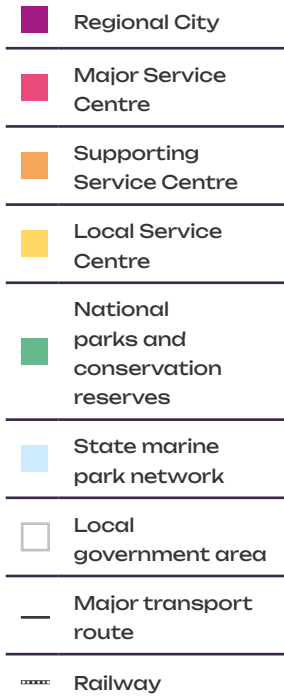
The Commission, in partnership with Planning and Land Use Services, is developing six new country regional plans for South Australia, including the Murray Mallee region. Planning for this growth and change is essential to ensure that all regions remain sustainable and prosperous.



Did you know?

South Australia has the only fully digitised planning system in the country, featuring the Regional Planning Portal. This platform provides interactive maps, spatial plans, and real-time data, helping align planning decisions with regional needs and supporting infrastructure, land use, and transport development across the state.

Where is the Murray Mallee planning region?



What is the Murray Mallee Regional Plan?

The Murray Mallee Regional Plan (the Plan) maps the government's long-term planning vision for the region to 2051 and beyond. It provides governments, businesses, industry and not-for-profit organisations with the data and direction to better plan for and respond to growth and change in our community and towns, while achieving our conservation goals. This is delivered within an electronic platform that can be tailored to the user's requirements.

How is the Plan developed?

Under the *Planning, Development and Infrastructure Act 2016*, regional plans are mandatory for each of the state's planning regions. Input from local councils, businesses, and residents gathered through workshops, surveys, and ongoing consultation shapes the Plan to ensure it meets regional needs.

What are the Plan's key themes?

The Plan focuses on:

- People, housing and liveability.
- Productive economy.
- Natural resources, environment and landscapes.
- Transport and infrastructure.
- Delivery and implementation.

What are some of the key themes that I can provide input on?

We are particularly interested in your views on how we can:

- Support housing growth in response to migration and changes in agriculture and manufacturing.
- Focus development within existing townships to maintain access to essential services.
- Protect water resources and biodiversity through conservation and sustainable land use.
- Strengthen the regional economy by safeguarding agricultural land and supporting emerging industries like renewable energy.
- Use climate data to manage risks from heat, drought, and extreme weather.

How can I learn more about the Plan?

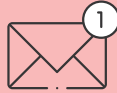
Join one of our online information sessions to hear directly from our planners. Register at: plansaevents.eventbrite.com.

You can also learn more by:



Visiting

regional.plan.sa.gov.au



Emailing

PlanSA@sa.gov.au



Calling

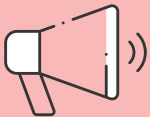
PlanSA Service Desk
on 1800 752 664

How can I provide feedback on the Plan?

Consultation is open for 12 weeks until 11:59 pm on Tuesday 17 June 2025. Visit [YourSAy](#) to provide your feedback.

When will the Plan be implemented?

After consultation, feedback will be considered, and the Plan updated and presented to the Commission for endorsement. The final Plan is expected to be released in late 2025 and will be accessible on the [Regional Planning Portal](#).



Stay updated

Sign up for the [Planning Ahead Newsletter](#).
Follow us on [Facebook](#) and [LinkedIn](#) for regular updates.