

# Deep Water Port Facility

## Smith Bay, Kangaroo Island

### Applicant

**Kangaroo Island Plantation  
Timbers Ltd.**

### Location

Smith Bay, on the north coast of Kangaroo Island approx 20km west of Kingscote.

### Amendment to the EIS

Following consultation on the draft EIS, which ran from 28 March to 28 May 2019, the proponent has amended the design of the in water component of the proposal and has prepared an Addendum to the EIS to reflect these changes.

The key changes contained in the Addendum are:

- > replacing the solid causeway with an open fully piled jetty structure
- > extending the open fully piled jetty out up to the -13.8m depth contour (estimated at up to 650m from the coast, up to an additional 250m further seaward than initially proposed).

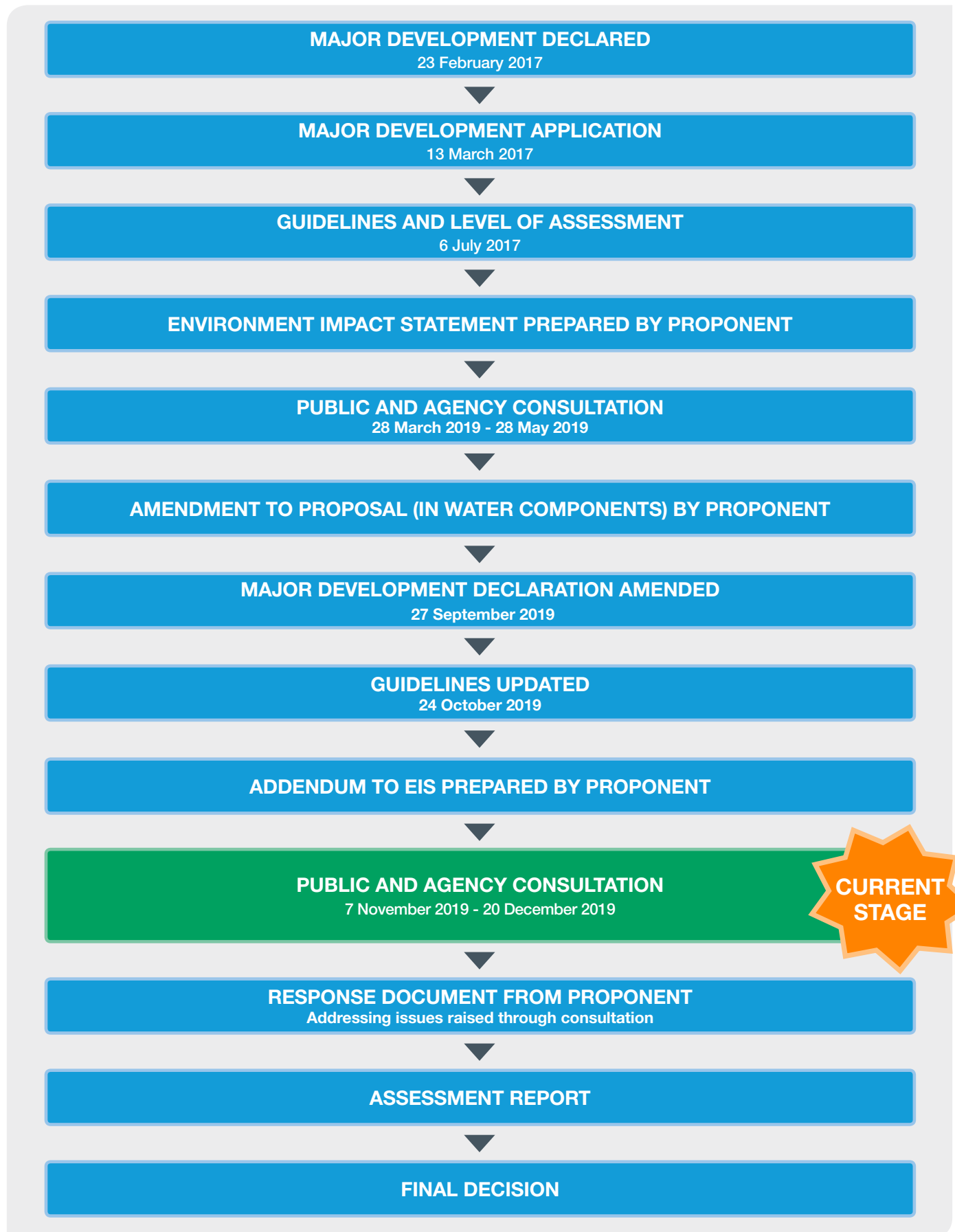
All other details of the previously consulted on EIS remain the same.

**Comment is currently sought  
on the changes contained in the  
Addendum to the EIS only.**



Government of South Australia  
Department of Planning,  
Transport and Infrastructure

# Assessment Process



# Major Development Assessment Process FAQ's

## What if I previously made a submission on the EIS?

You do not need to resubmit your previous submission.

All previous submissions are valid and will be considered during the assessment and decision making process.

Your submission was provided to the applicant, and will be responded to in the applicant's consolidated Response Document.

## Why is consultation happening again? What has changed?

The proponent has amended the design of the in-water elements of the proposal. As this was considered to significantly affect the substance of the EIS the Minister for Planning required the applicant to prepare an Addendum to the EIS. To gain public and Agency feedback on the proposed changes, and to inform the assessment of the proposal, the Minister for Planning determined it necessary to consult on the proposed changes.

## What are you seeking comment on now?

Comment is currently being sought on the Addendum to the EIS only. All other components of the previously released EIS remain the same.

## What happens with my submission?

All submissions (from this and the previous consultation period) are provided to the applicant, who must prepare a consolidated Response Document that responds to all submissions made and all issues raised during the consultation periods.

Your submission is also used to inform the Assessment Report.

All submissions, the applicant's Response Document, and the Assessment Report will be made publically available.

## What is taken into consideration during the assessment and decision making process?

All documents produced during the process including the Environmental Impact Statement (EIS), the Addendum to the EIS, the consolidated Response Document prepared by the applicant, all public and agency submissions made during the formal consultation periods, as well as the provisions of the relevant Development Plan(s)/Planning and Design Code, the Planning Strategy and any other relevant Government policies and/or strategies are taken into consideration during the assessment and decision making process.

## Who is responsible for assessing and making the final decision?

Sections of the new *Planning, Development and Infrastructure Act 2016* relevant to this proposal came into effect on 1 July 2019. Consequently, the final decision on this proposal will now be made by the Minister for Planning.



# How to have your say

## Release of an Addendum to the Environmental Impact Statement (EIS) for comment

The applicant has prepared an Addendum to the Environmental Impact Statement (EIS).

The Addendum addresses the environmental, social and economic issues associated with the changes proposed.

The Addendum is available for review and comment from **7 November 2019 to 20 December 2019**.

## Obtaining the Addendum to the EIS

The Addendum to the EIS is available for viewing at the following locations:

- > Department of Planning, Transport and Infrastructure (DPTI), Level 5, 50 Flinders Street, Adelaide
- > Kangaroo Island Council, 43 Dauncey Street, Kingscote, Kangaroo Island
- > Office of the Commissioner for Kangaroo Island, 43 Dauncey Street, Kingscote, Kangaroo Island

Copies of the Addendum to the EIS are available from the above locations.

The Addendum to the EIS document is available online, via the following links:

[www.sa.gov.au/planning/majordevelopments](http://www.sa.gov.au/planning/majordevelopments)  
[www.saplanningportal.sa.gov.au](http://www.saplanningportal.sa.gov.au)

## Submissions

Written submissions on the EIS are invited until 5pm on **20 December 2019**. Submissions can be made via:

- > letter addressed to:

### Minister for Planning

C/- Robert Kleeman

Unit Manager Policy and Strategic Assessment

Department of Planning, Transport and Infrastructure  
GPO Box 1815, ADELAIDE SA 5000

- > email to [majordevadmin@sa.gov.au](mailto:majordevadmin@sa.gov.au)

Submissions are made available for public inspection and are included in the proponent's Response Document (released for public information at a later date).

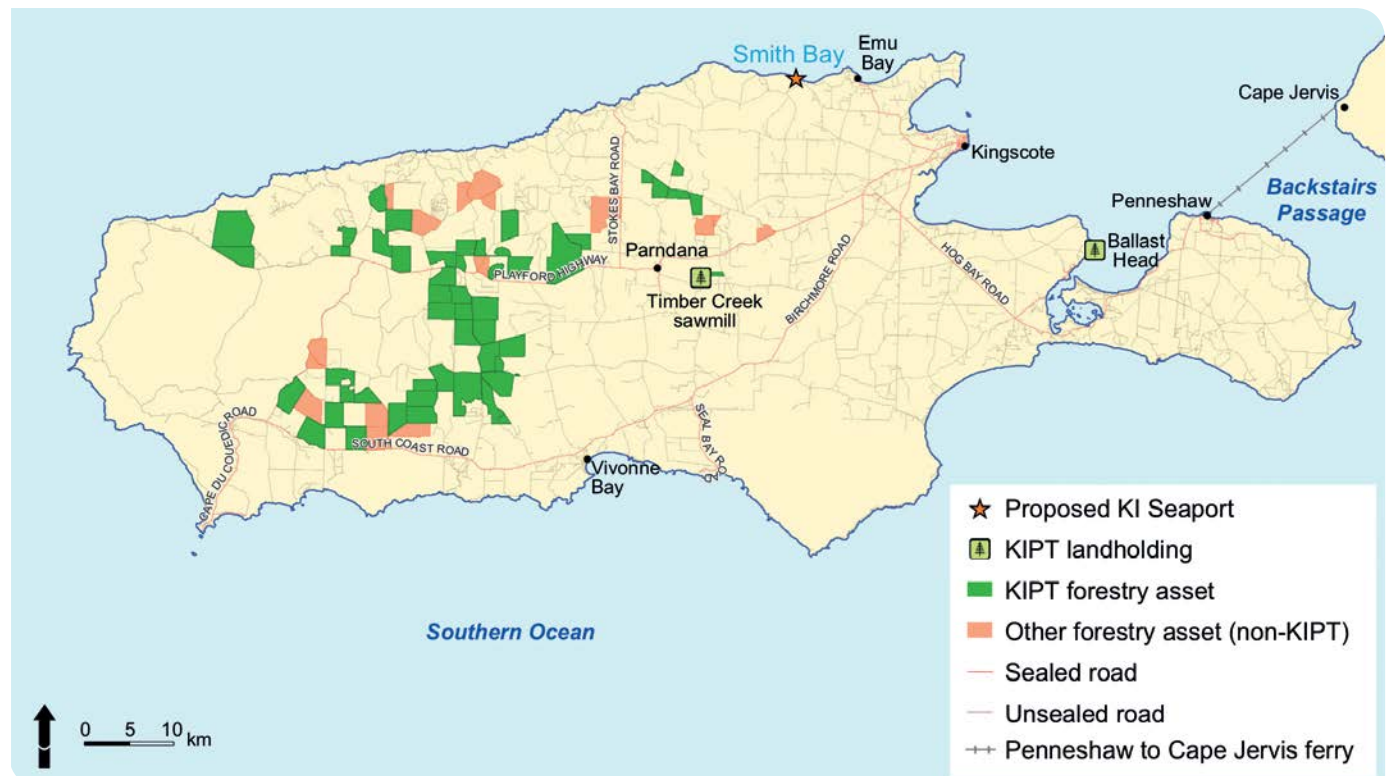
## Public Meetings

DPTI will be convening a public meeting during the public consultation period:

**Friday 29 November 2019 – 10am - 4pm** – Kingscote Town Hall, Dauncey Street, Kingscote, Kangaroo Island

Further information is available online at:

[www.saplanningportal.sa.gov.au](http://www.saplanningportal.sa.gov.au)



## Further information

Call – 1800 PLANNING – press option 1

Visit – [www.sa.gov.au/planning/majordevelopments](http://www.sa.gov.au/planning/majordevelopments)

Email – [majordevadmin@sa.gov.au](mailto:majordevadmin@sa.gov.au)